



Instituto de Infra-Estruturas  
Rodoviárias IP

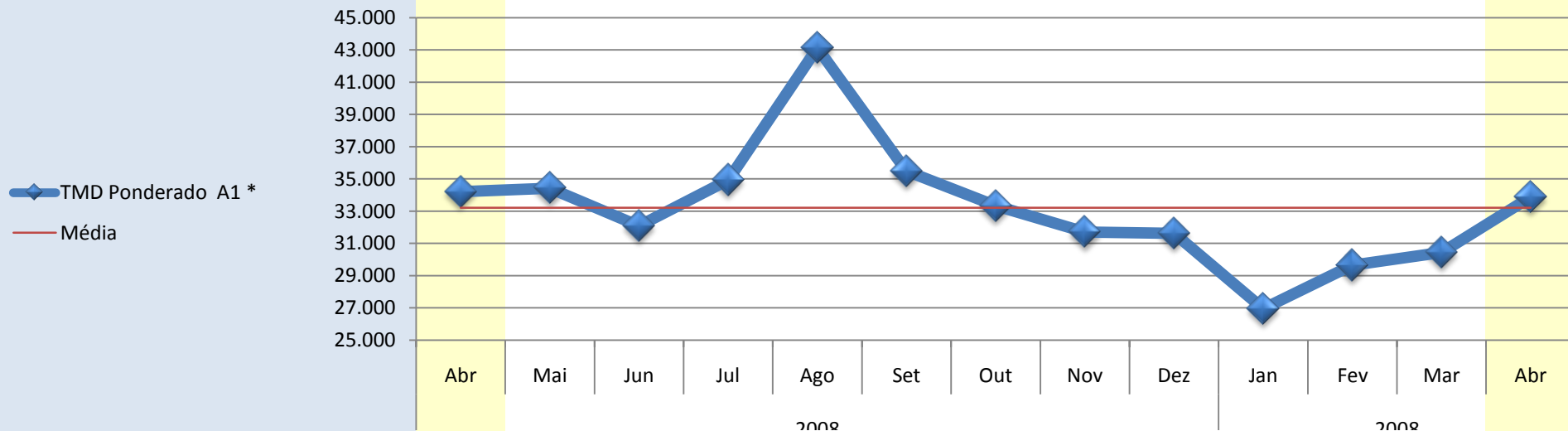
# RELATÓRIO DE TRÁFEGO NA REDE NACIONAL DE AUTO-ESTRADAS ABRIL 2009



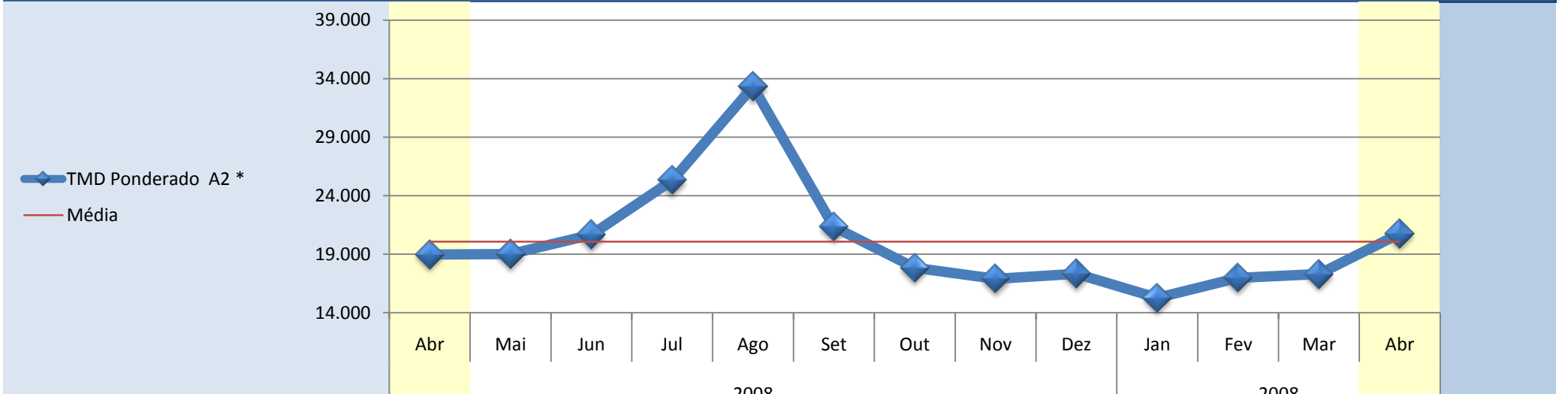
# **Relatório de Tráfego Abril de 2009**

# **Tráfego Médio Diário Mensal na Rede Nacional de Auto-Estradas**

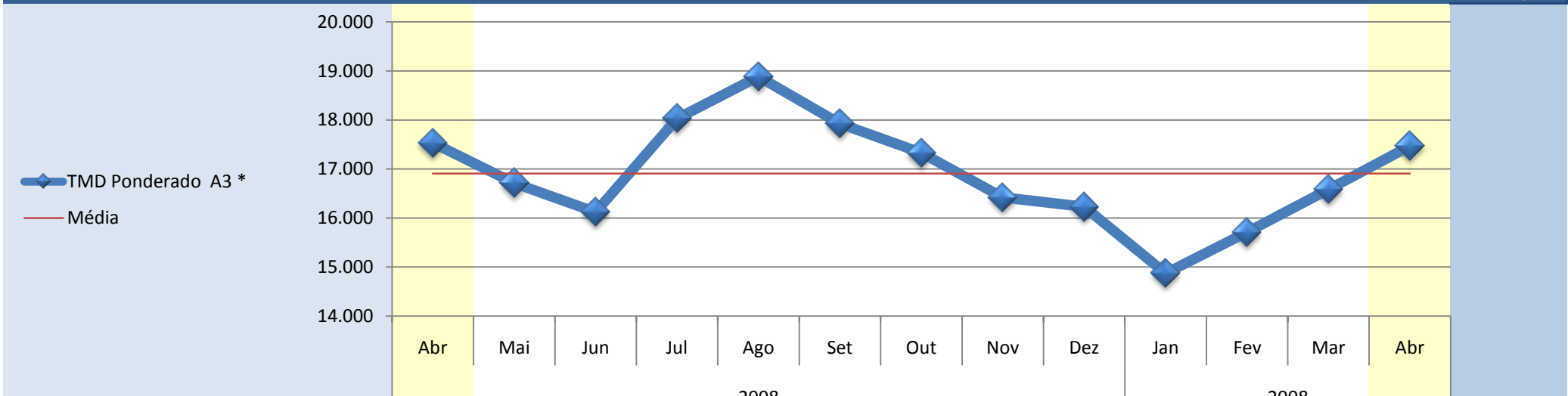
A1 *	2008									2008				Var. Abr 2008/2009
	Abr	Mai	Jun	Jul	Ago	Set	Out	Nov	Dez	Jan	Fev	Mar	Abr	
Alverca - Vila Franca de Xira II	69.233	69.670	66.719	68.742	72.125	69.800	72.277	70.358	68.368	60.641	66.873	68.312	70.271	1,48%
Vila Franca de Xira II - Vila Franca de Xira I	73.463	73.622	70.768	72.964	75.657	73.380	74.894	72.419	70.270	62.429	68.782	70.205	72.280	-1,64%
Vila Franca de Xira I-Nó A1/A10	58.380	59.072	56.424	58.664	62.760	59.342	60.161	58.555	57.183	49.166	55.072	55.965	58.771	0,66%
Nó A1/A10 -Carregado	67.109	67.091	64.612	68.062	70.448	69.891	68.536	66.676	66.194	58.259	63.016	64.632	68.564	2,12%
Carregado - Aveiras de Cima	47.738	48.165	46.264	49.011	54.438	50.168	48.159	47.226	47.604	40.449	44.453	45.323	49.573	3,70%
Aveiras de Cima - Cartaxo	36.797	37.383	35.690	37.761	43.814	38.855	36.985	36.567	37.106	30.631	34.064	34.511	38.485	4,39%
Cartaxo - Santarém	37.555	38.053	36.375	38.415	44.347	39.308	37.447	36.981	37.492	31.052	34.460	34.923	38.919	3,51%
Santarém - Nó com a A 15	40.033	40.881	39.968	43.516	54.042	43.412	40.091	39.360	39.870	33.057	36.911	37.428	42.641	6,12%
Nó com a A 15 - Torres Novas	37.659	38.552	37.385	40.826	51.756	41.074	37.617	36.987	37.697	30.888	34.631	34.967	40.405	6,80%
Torres Novas - Fátima	26.746	27.601	25.954	28.777	37.237	29.091	26.471	25.241	25.219	21.313	23.504	24.109	28.048	4,64%
Fátima - Leiria	26.944	28.055	26.290	29.346	40.422	29.807	26.932	25.032	25.452	21.337	23.519	24.190	28.015	3,82%
Leiria - Pombal	27.390	28.129	25.719	28.571	39.592	29.141	26.183	24.239	24.729	20.384	22.478	23.173	27.066	-1,19%
Pombal - Condeixa	29.624	29.690	26.352	29.137	39.910	29.724	26.866	24.842	25.222	20.882	22.941	23.701	27.526	-7,62%
Condeixa - Coimbra Sul	33.526	33.097	29.529	32.541	42.801	32.718	30.097	27.685	27.436	23.119	25.424	26.192	30.201	-11,01%
Coimbra Sul - Coimbra Norte	29.732	29.458	26.281	29.301	39.908	29.405	26.622	24.386	24.338	20.313	22.503	23.281	26.872	-10,64%
Coimbra Norte - Mealhada	30.234	29.751	26.213	28.599	35.853	29.243	27.082	25.013	24.192	21.204	23.123	24.249	26.749	-13,03%
Mealhada - Aveiro Sul	29.372	28.846	25.426	27.735	34.607	28.287	26.218	24.271	23.534	20.619	22.512	23.562	25.933	-13,26%
Aveiro Sul - Albergaria	25.562	25.481	22.698	24.821	31.762	25.263	23.205	21.416	20.908	18.194	19.844	20.725	23.025	-11,02%
Albergaria - Estarreja	49.205	48.761	46.500	51.102	57.119	51.740	49.839	46.979	45.531	41.536	45.054	46.818	49.746	1,09%
Estarreja - Feira	25.170	24.971	23.439	26.726	34.128	27.072	25.452	23.736	23.598	20.275	22.021	22.729	25.016	-0,62%
Feira - Nó com o IC 24	31.220	30.631	28.880	32.334	38.619	32.859	31.680	30.129	29.829	26.189	28.079	28.940	30.918	-0,98%
Nó com o IC 24 - Grijó	34.052	33.328	31.602	35.016	40.517	35.598	34.732	33.093	32.873	29.086	31.203	32.059	33.873	-0,53%
<b>TMD Ponderado A1 *</b>	<b>34.210</b>	<b>34.425</b>	<b>32.087</b>	<b>34.935</b>	<b>43.132</b>	<b>35.485</b>	<b>33.326</b>	<b>31.705</b>	<b>31.619</b>	<b>26.944</b>	<b>29.640</b>	<b>30.440</b>	<b>33.881</b>	<b>-0,97%</b>



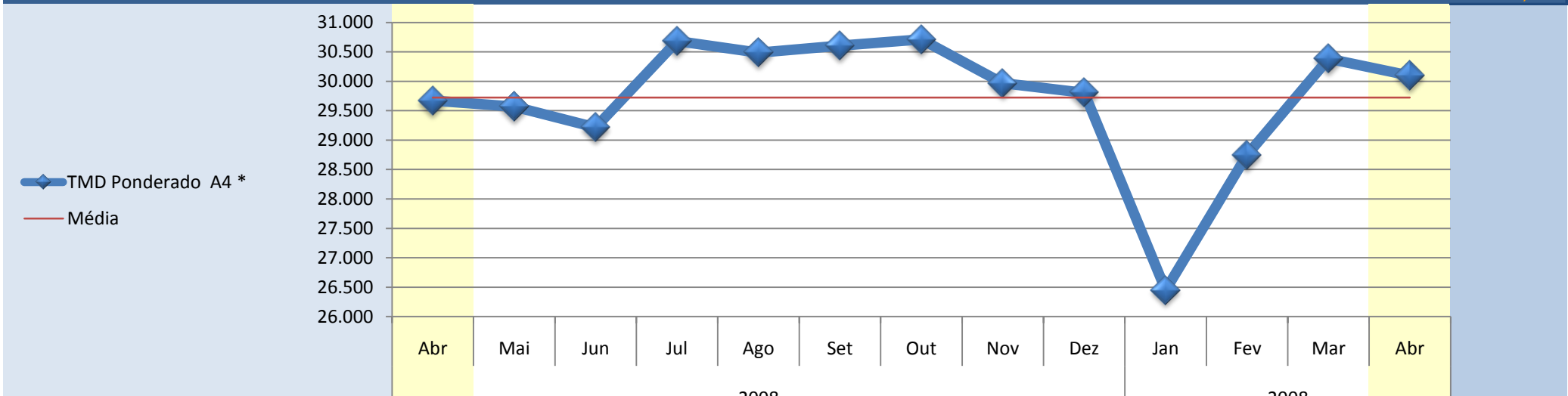
A2 *	2008									2008				Var. Abr 2008/2009
	Abr	Mai	Jun	Jul	Ago	Set	Out	Nov	Dez	Jan	Fev	Mar	Abr	
Pt 25 de Abril (Lisboa - Almada)	154.383	152.132	158.228	166.800	160.000	154.337	151.771	147.521	143.782	138.879	146.227	152.388	150.243	-2,76%
Fogueteiro - Coima	52.406	52.587	49.817	53.411	52.823	52.043	51.573	50.880	50.274	46.146	48.812	50.864	51.582	-1,60%
Coima - Palmela	34.883	34.641	34.156	37.457	39.336	35.958	34.801	33.824	32.969	30.573	32.662	33.722	35.126	0,69%
Palmela - Setúbal	35.403	35.082	34.676	38.110	39.948	36.397	35.546	34.472	33.470	31.176	33.216	34.310	35.621	0,61%
Setúbal - Marateca	24.008	24.072	25.673	30.249	37.140	26.368	22.760	21.913	22.612	19.034	21.720	21.752	25.705	6,60%
Marateca-Nó da A 2	21.847	21.990	23.289	27.705	34.443	24.067	20.628	19.787	20.563	17.219	19.656	19.685	23.489	6,99%
Nó da A2- Alcácer do Sal	16.892	17.178	19.515	25.168	36.657	20.118	15.515	14.426	15.176	12.687	14.793	14.878	19.441	13,11%
Alcácer do Sal - Grândola Norte	15.004	15.099	17.074	22.401	33.385	17.967	13.704	12.731	13.493	11.246	13.009	13.032	17.528	14,40%
Grândola Norte - Grândola Sul	11.649	11.746	13.353	17.699	26.744	14.152	10.538	9.697	10.326	8.521	9.858	9.916	13.822	15,72%
Grândola Sul - Aljustrel	8.873	8.966	10.669	14.838	23.453	11.298	7.781	7.023	7.588	6.277	7.362	7.372	10.854	18,25%
Aljustrel - Castro Verde	8.712	8.806	10.518	14.720	23.325	11.164	7.628	6.879	7.450	6.171	7.251	7.255	10.718	18,72%
Castro Verde - Almodôvar	9.647	9.769	11.605	16.201	25.333	12.241	8.485	7.692	8.390	6.954	8.106	8.113	11.803	18,27%
Almodôvar - Messines	9.826	9.961	11.823	16.438	25.631	12.443	8.679	7.931	8.653	7.146	8.285	8.292	12.082	18,67%
Messines - Nó com a VLA	9.657	9.841	11.667	16.275	25.275	12.279	8.571	7.754	8.436	7.013	8.159	8.205	11.928	19,04%
<b>TMD Ponderado A2 *</b>	<b>18.970</b>	<b>19.017</b>	<b>20.652</b>	<b>25.302</b>	<b>33.330</b>	<b>21.334</b>	<b>17.832</b>	<b>16.900</b>	<b>17.318</b>	<b>15.263</b>	<b>16.971</b>	<b>17.296</b>	<b>20.754</b>	<b>8,60%</b>



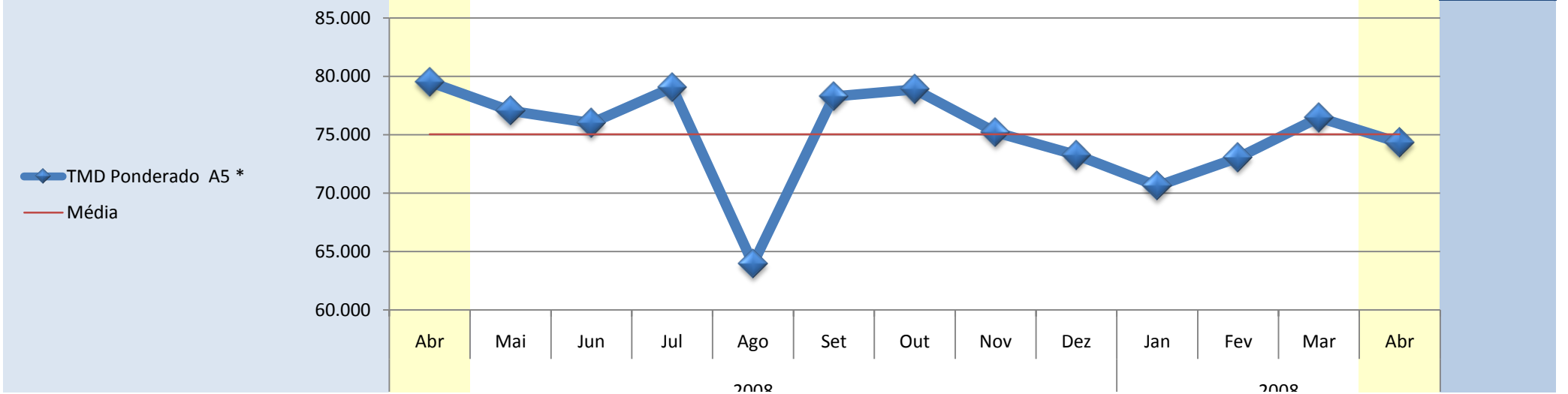
A3 *	2008									2008				Var. Abr 2008/2009
	Abr	Mai	Jun	Jul	Ago	Set	Out	Nov	Dez	Jan	Fev	Mar	Abr	
Maia - Santo Tirso	50.924	48.858	46.814	50.799	45.547	51.690	52.192	50.194	48.340	45.715	47.890	50.819	51.668	1,44%
Santo Tirso - Famalicão	43.964	42.098	40.535	44.321	39.986	44.775	44.996	42.971	41.717	39.332	41.437	43.852	45.113	2,55%
Famalicão - Cruz	21.977	21.015	20.398	22.591	23.457	22.794	22.266	21.062	20.624	19.224	20.339	21.587	22.306	1,48%
Cruz - Braga Sul	18.745	17.814	17.310	19.379	20.547	19.461	19.001	17.878	17.577	16.175	17.163	18.300	19.022	1,46%
Braga Sul - Braga Oeste	7.432	7.090	7.032	8.308	10.583	7.944	7.118	6.627	6.772	5.831	6.331	6.698	7.442	0,14%
Braga Oeste - Nó com a EN 201	6.998	6.731	6.643	7.876	10.547	7.576	6.520	6.031	6.322	5.364	5.833	6.076	6.937	-0,88%
Nó com a EN 201 - Ponte de Lima Sul	8.109	7.772	7.689	8.992	11.698	8.618	7.574	7.027	7.233	6.289	6.767	7.041	7.861	-3,15%
Ponte de Lima Sul - Ponte de Lima Norte	10.921	10.452	10.255	11.660	14.551	11.351	10.292	9.741	9.879	8.865	9.381	9.798	10.533	-3,69%
Ponte de Lima Norte - Nó com a EN 303	8.458	7.821	7.424	8.763	11.079	8.228	7.432	6.867	7.175	6.107	6.438	6.678	7.672	-10,25%
Nó com a EN 303 - Valença	8.282	7.640	7.234	8.482	10.662	8.040	7.278	6.730	7.055	5.996	6.291	6.526	7.496	-10,49%
<b>TMD Ponderado A3 *</b>	<b>17.531</b>	<b>16.710</b>	<b>16.117</b>	<b>18.031</b>	<b>18.884</b>	<b>17.928</b>	<b>17.327</b>	<b>16.419</b>	<b>16.227</b>	<b>14.872</b>	<b>15.708</b>	<b>16.585</b>	<b>17.469</b>	<b>-0,35%</b>



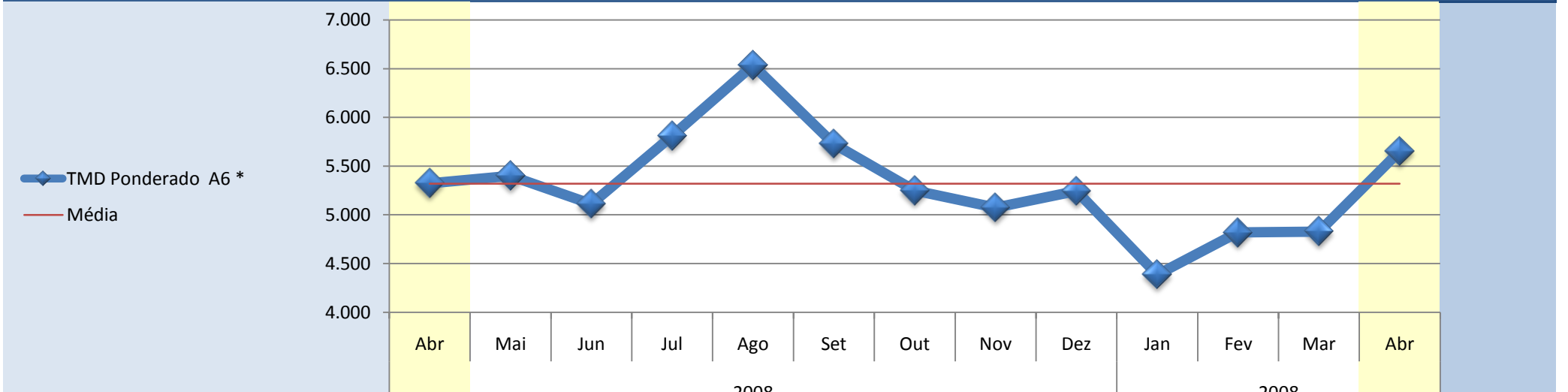
A4 *	2008									2008				Var. Abr 2008/2009
	Abr	Mai	Jun	Jul	Ago	Set	Out	Nov	Dez	Jan	Fev	Mar	Abr	
Matosinhos - Sendim	39.993	43.876	39.462	40.028	33.189	38.045	40.521	39.241	38.277	38.358	40.304	43.086	39.968	-0,06%
Sendim / Guifões - Custóias	53.195	53.879	51.987	54.361	46.638	54.412	56.557	54.695	54.555	52.805	54.881	58.993	55.822	4,71%
Custóias - Via Norte	53.286	52.672	51.749	54.852	48.140	54.546	56.731	55.125	55.302	53.343	55.068	59.643	56.601	5,86%
Via Norte - Ponte da Pedra	50.783	49.855	49.311	52.305	46.240	52.251	54.648	52.918	52.565	51.125	52.898	57.108	54.262	6,41%
Ponte da Pedra - Águas Santas	48.365	47.476	46.813	49.869	44.014	50.015	53.188	50.419	50.067	48.620	50.328	54.523	51.910	6,83%
Águas Santas - Ermesinde	72.985	71.860	70.848	69.302	66.920	68.683	67.200	68.943	68.089	61.115	65.506	68.951	67.688	-7,82%
Ermesinde - Valongo	39.698	39.086	38.536	40.437	39.047	40.583	41.135	40.227	39.729	35.660	38.222	40.232	39.495	-0,51%
Valongo - Campo	36.834	36.451	35.938	37.684	36.893	37.784	38.342	37.336	36.645	32.524	35.211	37.118	36.600	-0,64%
Campo - Baltar	28.450	28.424	28.231	29.893	30.648	29.994	29.870	29.275	29.101	24.972	27.397	28.709	28.885	1,51%
Baltar - Paredes	24.246	24.299	24.131	25.630	26.632	25.598	25.333	24.894	24.736	20.866	23.171	24.170	24.537	1,18%
Paredes - Guilhufe	20.905	21.021	20.915	22.344	23.695	22.237	21.916	21.533	21.359	17.815	19.905	20.824	21.242	1,58%
Guilhufe - Penafiel	20.492	20.543	20.388	21.646	22.896	21.554	21.302	20.853	20.768	17.377	19.441	20.315	20.745	1,22%
Penafiel - Nó com o IP 9	18.122	18.229	18.218	19.474	21.100	19.340	18.918	18.308	18.305	15.184	17.184	17.951	18.508	2,08%
Nó com o IP 9 - Amarante	14.677	14.720	14.803	16.013	18.252	15.937	15.381	14.579	14.754	12.055	14.133	14.822	15.352	4,40%
<b>TMD Ponderado A4 *</b>	<b>29.672</b>	<b>29.568</b>	<b>29.218</b>	<b>30.686</b>	<b>30.488</b>	<b>30.606</b>	<b>30.713</b>	<b>29.971</b>	<b>29.805</b>	<b>26.451</b>	<b>28.745</b>	<b>30.385</b>	<b>30.096</b>	<b>1,41%</b>



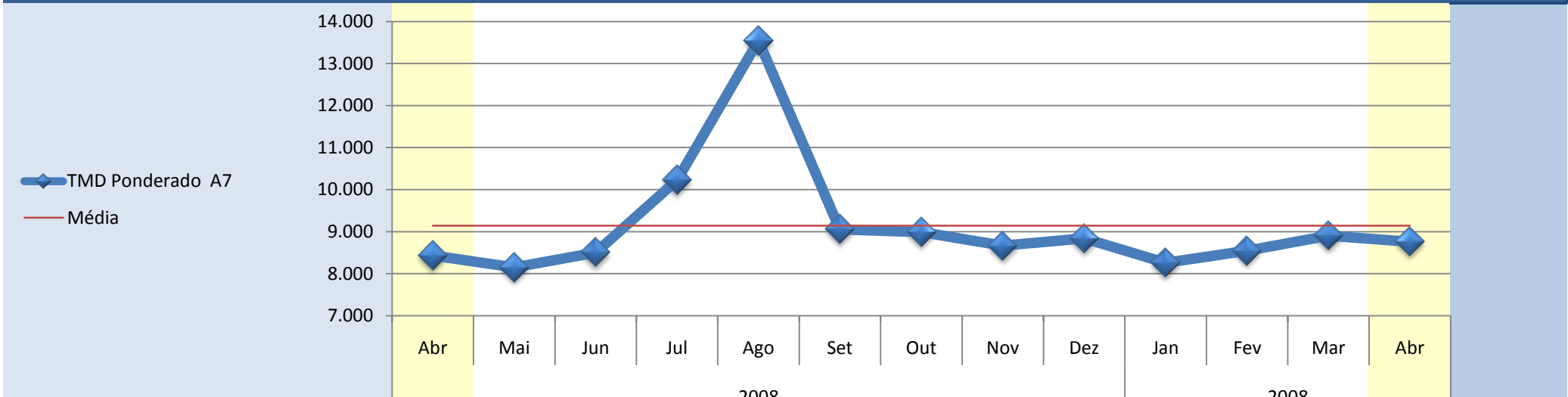
A5 *	2008									2008				Var. Abr 2008/2009
	Abr	Mai	Jun	Jul	Ago	Set	Out	Nov	Dez	Jan	Fev	Mar	Abr	
Estádio Nacional - Oeiras	131.847	128.388	126.103	131.788	105.081	130.807	132.542	126.389	123.303	119.719	123.282	128.530	125.309	-5,22%
Oeiras - Carcavelos	86.972	84.501	83.939	87.172	71.090	86.075	86.388	82.749	80.648	77.439	80.436	83.947	81.727	-6,42%
Carcavelos - Estoril	58.260	56.195	55.138	56.964	47.016	57.496	57.415	54.743	52.958	50.673	52.391	55.242	53.410	-9,08%
Estoril - Alcabideche	43.330	41.355	41.252	42.858	34.353	40.764	41.391	39.005	38.309	36.841	38.421	40.519	39.126	-10,74%
<b>TMD Ponderado A5 *</b>	<b>79.519</b>	<b>77.044</b>	<b>76.004</b>	<b>79.037</b>	<b>63.940</b>	<b>78.288</b>	<b>78.879</b>	<b>75.207</b>	<b>73.260</b>	<b>70.616</b>	<b>73.046</b>	<b>76.470</b>	<b>74.305</b>	<b>-7,02%</b>



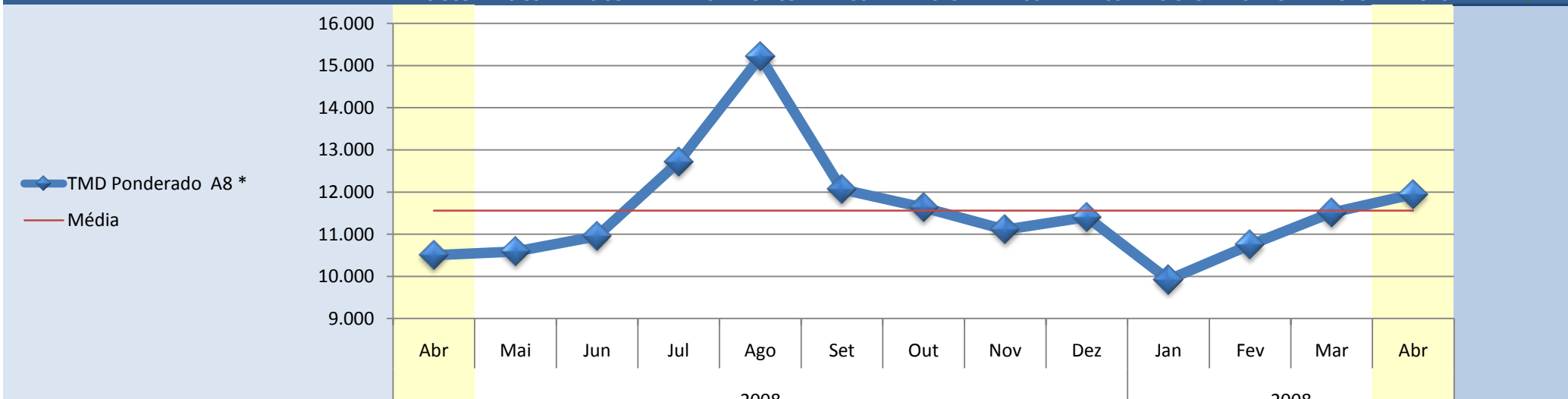
A6 *	2008									2008				Var. Abr 2008/2009
	Abr	Mai	Jun	Jul	Ago	Set	Out	Nov	Dez	Jan	Fev	Mar	Abr	
Nó com a A 2 e A 13 - Vendas Novas	8.981	9.070	8.659	9.427	10.126	9.510	8.926	8.723	8.894	7.474	8.221	8.220	9.366	4,11%
Vendas Novas - Montemor Oeste	8.343	8.418	8.003	8.736	9.444	8.866	8.316	8.138	8.324	6.947	7.651	7.637	8.729	4,43%
Montemor Oeste - Montemor Este	7.671	7.760	7.361	8.021	8.700	8.149	7.673	7.485	7.600	6.375	6.994	6.986	8.027	4,44%
Montemor Este - Évora Poente	6.757	6.838	6.460	7.106	7.788	7.196	6.763	6.550	6.642	5.595	6.136	6.155	7.082	4,59%
Évora Poente - Évora Nascente	3.114	3.192	3.003	3.583	4.249	3.423	3.024	2.925	3.076	2.492	2.786	2.787	3.396	8,32%
Évora Nascente - Extremoz	3.849	3.914	3.660	4.399	5.200	4.212	3.744	3.599	3.778	3.144	3.450	3.471	4.229	9,00%
Extremoz - Borba	2.882	2.951	2.784	3.475	4.229	3.215	2.770	2.596	2.794	2.337	2.562	2.566	3.166	8,97%
Borba - Elvas	2.890	2.963	2.790	3.494	4.209	3.208	2.759	2.537	2.744	2.316	2.521	2.545	3.114	7,19%
<b>TMD Ponderado A6 *</b>	<b>5.324</b>	<b>5.400</b>	<b>5.111</b>	<b>5.811</b>	<b>6.535</b>	<b>5.729</b>	<b>5.250</b>	<b>5.074</b>	<b>5.244</b>	<b>4.384</b>	<b>4.819</b>	<b>4.828</b>	<b>5.655</b>	<b>5,84%</b>



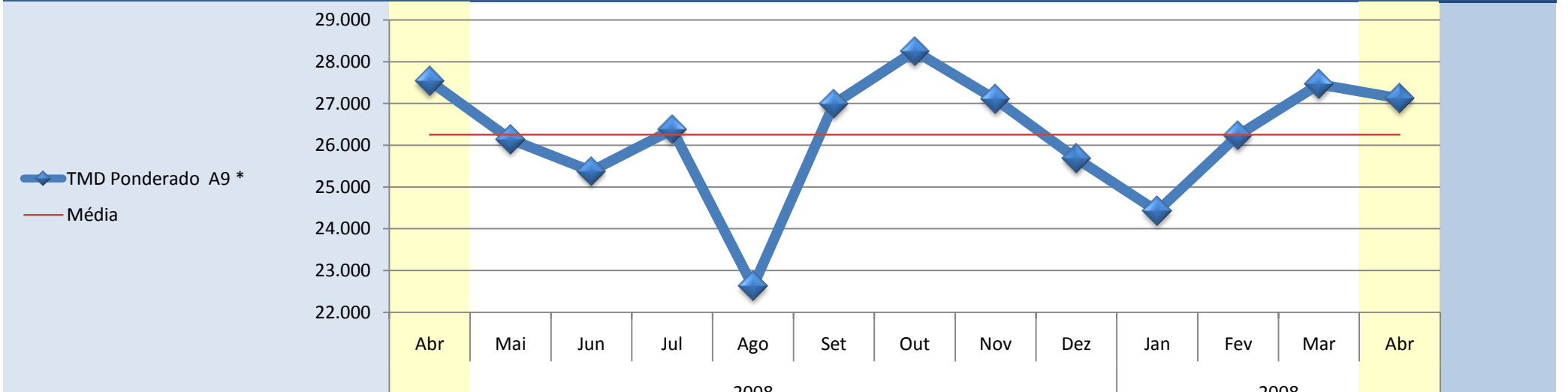
A7	2008									2008				Var. Abr 2008/2009
	Abr	Mai	Jun	Jul	Ago	Set	Out	Nov	Dez	Jan	Fev	Mar	Abr	
Póvoa de Varzim - EN 206	6.875	6.422	8.131	10.492	14.722	7.598	6.546	6.293	6.490	6.150	6.623	6.974	7.033	2,25%
EN 206 - Famalicão	7.346	6.829	8.627	11.038	15.517	8.089	6.957	6.674	6.917	6.545	7.083	7.412	7.348	0,03%
Famalicão - A3	18.831	17.746	18.465	21.033	21.658	19.115	18.865	18.023	18.016	17.370	17.641	18.816	18.297	-2,92%
A3 - Ceide	21.086	19.990	20.515	23.498	25.282	21.577	21.241	20.539	20.318	19.546	19.782	20.979	20.894	-0,92%
Ceide - Ave	18.130	17.294	17.752	20.306	21.812	18.869	18.542	17.852	17.560	16.890	17.023	18.077	17.970	-0,89%
Ave - Selho	16.483	15.738	15.845	17.915	18.904	16.893	16.745	16.255	16.110	15.412	15.598	16.773	16.640	0,94%
Selho - Guimarães Sul	7.822	7.612	7.526	9.038	12.272	8.318	8.018	7.641	7.749	7.173	7.284	7.686	8.118	3,64%
Guimarães Sul - Calvos	8.629	8.397	8.240	9.795	13.052	9.139	8.902	8.514	8.609	8.033	8.176	8.643	9.072	4,88%
Calvos - Fafe	6.798	6.672	6.557	7.946	11.503	7.335	6.917	6.660	6.975	6.259	6.394	6.552	7.282	6,65%
Fafe - Basto	5.961	5.986	5.843	7.115	10.832	6.673	6.242	6.061	6.425	5.634	5.814	5.835	6.601	9,69%
Basto - Ribeira de Pena	5.066	5.101	4.972	6.122	9.584	5.658	5.318	5.020	5.318	4.748	4.913	4.948	5.627	9,97%
Ribeira de Pena - IP3	4.780	4.798	4.681	5.847	9.111	5.353	9.125	8.903	9.030	8.712	9.368	9.625	5.386	11,25%
<b>TMD Ponderado A7</b>	<b>8.429</b>	<b>8.151</b>	<b>8.501</b>	<b>10.227</b>	<b>13.544</b>	<b>9.053</b>	<b>8.993</b>	<b>8.664</b>	<b>8.840</b>	<b>8.257</b>	<b>8.548</b>	<b>8.901</b>	<b>8.759</b>	<b>3,77%</b>



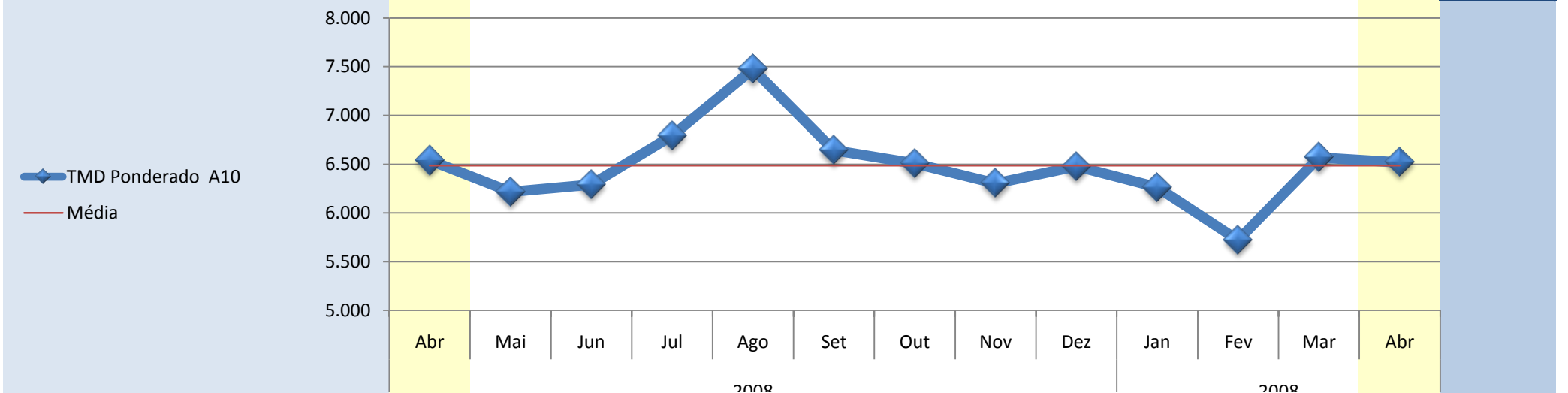
A8 *	2008									2008				Var. Abr 2008/2009
	Abr	Mai	Jun	Jul	Ago	Set	Out	Nov	Dez	Jan	Fev	Mar	Abr	
Loures - Crel	45.781	45.780	45.160	47.951	44.569	47.042	46.977	45.956	45.634	42.290	45.324	46.913	46.195	0,90%
CREL - Lousa	54.940	54.939	54.674	58.184	54.593	56.973	56.776	55.062	54.877	51.273	54.457	56.220	55.470	0,96%
Lousa - Malveira	50.102	50.371	50.317	53.659	50.983	52.306	51.886	50.255	50.125	46.824	50.046	51.744	51.259	2,26%
Malveira - Enxara	27.909	28.001	28.388	31.191	31.073	29.560	28.870	28.070	28.478	25.744	27.986	28.850	29.063	3,97%
Enxara - Torres Vedras Sul	26.383	26.512	27.002	29.830	29.845	28.073	27.463	26.641	27.076	24.433	26.613	27.405	27.614	4,46%
T. Vedras Sul - T. Vedras Norte	20.984	21.271	22.005	24.631	25.494	23.024	22.193	21.482	21.963	19.536	21.137	22.294	22.657	7,38%
Torres Vedras Norte - Ramalhal	22.286	22.527	23.323	26.089	27.339	24.407	23.533	22.822	23.236	20.737	22.264	23.618	24.020	7,22%
Ramalhal - Campelos	16.353	16.633	17.167	19.572	20.939	18.337	17.681	17.168	17.611	15.384	16.591	17.767	18.129	9,80%
Campelos - Bombarral	15.825	16.140	16.653	19.089	20.499	17.864	17.152	16.654	17.089	14.877	16.035	17.200	17.573	9,95%
Tornada - Alfeizerão	11.354	11.550	12.083	14.168	16.948	13.239	12.611	12.058	12.486	10.732	11.668	12.516	13.127	13,50%
Alfeizerão - Valado dos Frades	11.326	11.507	12.007	13.968	16.447	13.167	12.630	12.111	12.462	10.783	11.689	12.575	13.141	13,81%
Valado dos Frades - Pataias	11.419	11.566	12.079	14.013	16.896	13.302	12.805	12.235	12.595	10.923	11.867	12.715	13.229	13,68%
Pataias - Marinha Grande Sul	11.106	11.230	11.703	13.627	16.513	12.976	12.534	11.958	12.352	10.675	11.618	12.442	12.940	14,18%
Marinha Grande Sul - Nó c/ A 17Sul	10.985	11.112	11.568	13.443	16.246	12.887	12.536	11.974	12.247	10.645	11.593	12.444	12.927	15,02%
Nó c/ A 17 Sul - Nó c/ A 17 Norte	7.342	6.998	6.638	7.533	8.607	7.103	6.895	6.508	6.483	5.935	6.231	6.587	6.490	-13,13%
Nó c/ A 17 Norte - M. Grande Este	7.962	7.724	7.489	8.544	9.869	8.104	7.889	7.445	7.428	6.798	7.181	7.566	7.534	-5,68%
Marinha Grande Este - Leiria	6.408	6.203	5.933	6.860	8.186	6.483	6.279	5.912	5.939	5.359	5.640	5.975	5.966	-7,40%
<b>TMD Ponderado A8 *</b>	<b>10.505</b>	<b>10.592</b>	<b>10.954</b>	<b>12.723</b>	<b>15.205</b>	<b>12.064</b>	<b>11.629</b>	<b>11.106</b>	<b>11.405</b>	<b>9.919</b>	<b>10.743</b>	<b>11.513</b>	<b>11.946</b>	<b>12,07%</b>



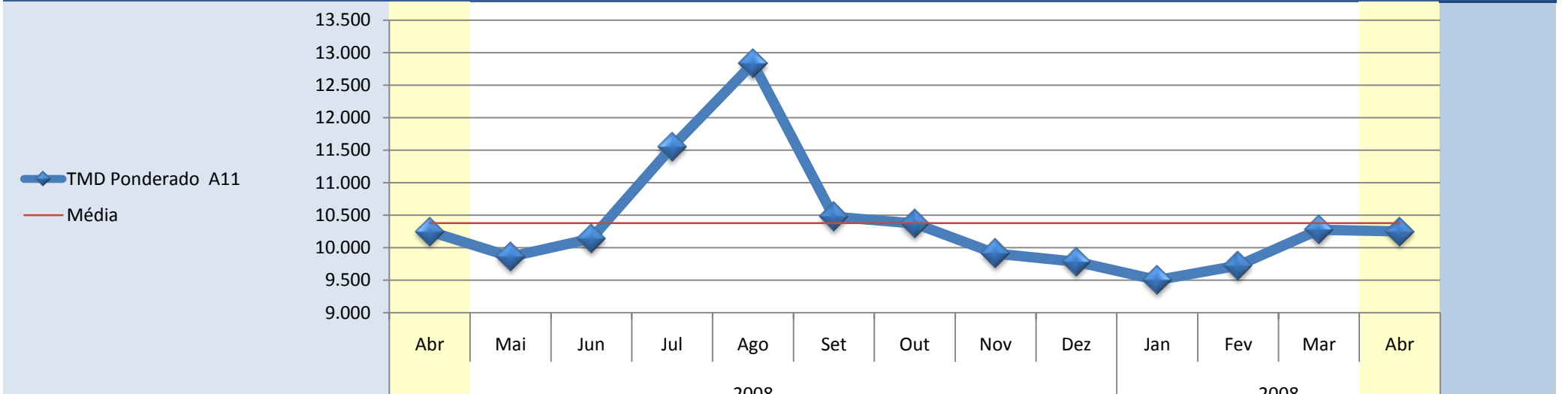
A9 *	2008									2008				Var. Abr 2008/2009
	Abr	Mai	Jun	Jul	Ago	Set	Out	Nov	Dez	Jan	Fev	Mar	Abr	
Estádio Nacional - Queluz	39.970	37.644	37.866	39.318	31.966	38.838	40.584	38.560	36.609	36.160	38.359	40.554	38.633	-3,46%
Queluz - A9/A16	43.555	40.953	40.087	41.792	33.941	42.779	45.123	43.002	40.767	39.962	42.512	44.866	43.964	0,93%
A9/A16 - Pontinha	43.555	40.953	40.087	41.792	33.941	42.779	45.123	43.002	40.767	39.962	42.512	44.866	43.964	0,93%
Pontinha - Odivelas	28.325	27.027	26.178	27.375	23.801	28.197	29.409	28.185	27.041	25.695	27.421	28.711	28.538	0,75%
Odivelas - Nó com a A 8	29.625	28.426	27.380	28.342	24.960	29.443	30.591	29.264	28.112	26.440	28.156	29.430	29.284	-1,16%
Nó com a A 8 - Zambujal	25.453	24.251	23.199	23.750	20.746	24.778	25.767	24.766	23.484	22.051	23.531	24.457	24.524	-3,79%
Zambujal - Nó com a A 10	16.420	15.600	14.845	15.430	14.164	15.907	16.405	16.043	15.230	13.748	14.939	15.501	15.851	-3,59%
Nó com a A 10 - Alverca	10.280	10.130	9.300	9.546	9.484	9.550	10.784	10.548	8.605	6.979	9.370	9.193	8.803	-16,79%
<b>TMD Ponderado A9 *</b>	<b>27.535</b>	<b>26.143</b>	<b>25.381</b>	<b>26.373</b>	<b>22.619</b>	<b>26.989</b>	<b>28.253</b>	<b>27.099</b>	<b>25.681</b>	<b>24.418</b>	<b>26.239</b>	<b>27.463</b>	<b>27.123</b>	<b>-1,52%</b>



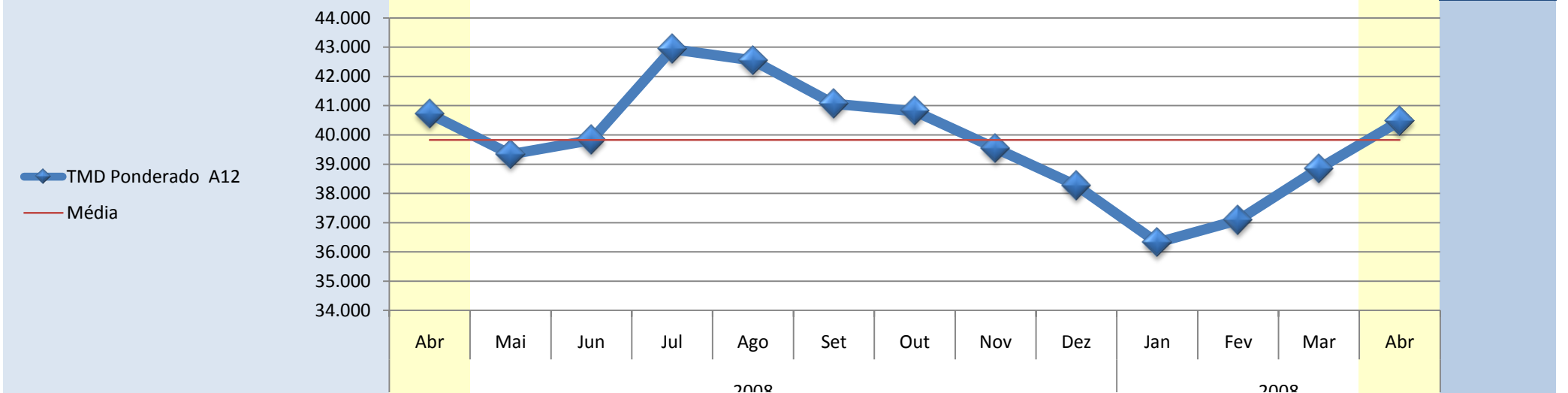
A10	2008									2008				Var. Abr 2008/2009
	Abr	Mai	Jun	Jul	Ago	Set	Out	Nov	Dez	Jan	Fev	Mar	Abr	
Nó com a A 9 - Arruda	12.674	11.698	11.591	11.877	11.906	11.845	12.359	12.084	12.753	12.931	9.565	12.786	10.964	-15,60%
Arruda - Nó com a A 1 Carregado	8.825	8.097	8.070	8.366	8.563	8.323	8.434	8.290	9.197	9.285	7.804	8.972	9.235	4,43%
Carregado - Benavente	5.384	5.294	5.433	6.064	6.900	5.881	5.543	5.344	5.201	4.754	5.215	5.427	5.706	5,64%
Benavente - Nó com a A 13	2.055	2.043	2.198	2.739	4.007	2.477	2.067	1.868	1.835	1.630	1.808	1.883	2.355	12,72%
<b>TMD Ponderado A10</b>	<b>6.539</b>	<b>6.216</b>	<b>6.290</b>	<b>6.795</b>	<b>7.476</b>	<b>6.644</b>	<b>6.507</b>	<b>6.303</b>	<b>6.477</b>	<b>6.262</b>	<b>5.720</b>	<b>6.569</b>	<b>6.517</b>	<b>-0,33%</b>



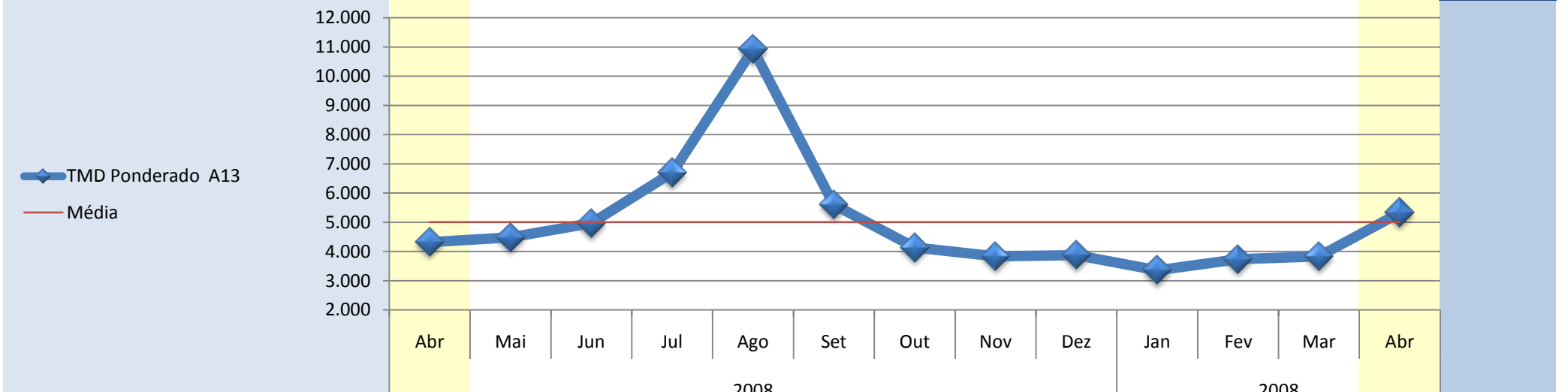
A11	2008									2008				Var. Abr 2008/2009
	Abr	Mai	Jun	Jul	Ago	Set	Out	Nov	Dez	Jan	Fev	Mar	Abr	
Apúlia - EN 205	9.529	8.997	10.369	12.969	16.172	10.144	9.125	8.903	9.030	8.712	9.368	9.625	9.609	0,83%
EN 205 - Barcelos	8.035	7.584	8.950	11.408	14.559	8.744	7.797	7.457	7.536	7.327	7.851	8.077	8.110	0,92%
Barcelos - Braga (Oeste)	9.658	9.101	10.227	12.442	14.937	9.971	9.419	8.955	8.860	8.764	9.029	9.439	9.200	-4,98%
Braga (Oeste) - Braga (Ferreiros)	9.244	8.737	9.767	11.858	14.389	9.592	9.037	8.575	8.536	8.399	8.553	8.966	8.803	-5,01%
Braga (Ferreiros) - Celeirós	24.692	23.848	22.754	24.766	24.871	24.820	25.619	24.478	24.215	22.271	23.101	24.515	24.450	-0,99%
Celeirós - Guimarães Oeste	12.203	11.856	11.348	12.294	12.923	12.021	12.649	12.130	11.894	11.606	11.294	11.903	11.894	-2,60%
Guimarães Oeste - Selho	16.560	15.867	15.807	17.720	18.755	16.992	16.997	16.356	16.206	15.593	15.817	16.892	16.779	1,30%
Calvos - Vizela	6.302	6.120	5.976	6.584	7.046	6.448	6.553	6.313	6.169	5.959	6.103	6.568	6.503	3,09%
Vizela - Felgueiras	6.462	6.271	6.116	6.685	6.971	6.600	6.696	6.449	6.257	6.049	6.203	6.700	6.726	3,92%
Felgueiras - Lousada	9.847	9.531	9.302	9.894	9.680	9.762	10.084	9.242	9.019	9.155	9.253	10.017	9.951	1,05%
Lousada - Lousada	12.794	12.528	12.357	12.975	12.516	12.899	13.266	12.514	12.316	12.199	12.783	13.738	13.693	6,57%
Lousada - EN 15	8.502	8.378	8.409	8.930	9.088	8.838	8.997	8.708	8.469	8.294	8.701	9.358	9.312	8,69%
EN 15 - EN 211	7.723	7.570	7.596	8.020	8.342	7.950	8.094	7.851	7.675	7.378	7.662	8.208	8.202	5,84%
EN 211 - IP4 (Nó de Castelões)	11.353	11.191	11.217	11.783	12.398	11.586	5.068	4.676	5.055	4.527	4.691	4.689	11.439	0,75%
<b>TMD Ponderado A11</b>	<b>10.251</b>	<b>9.861</b>	<b>10.140</b>	<b>11.552</b>	<b>12.833</b>	<b>10.476</b>	<b>10.372</b>	<b>9.911</b>	<b>9.784</b>	<b>9.501</b>	<b>9.724</b>	<b>10.276</b>	<b>10.249</b>	<b>-0,02%</b>



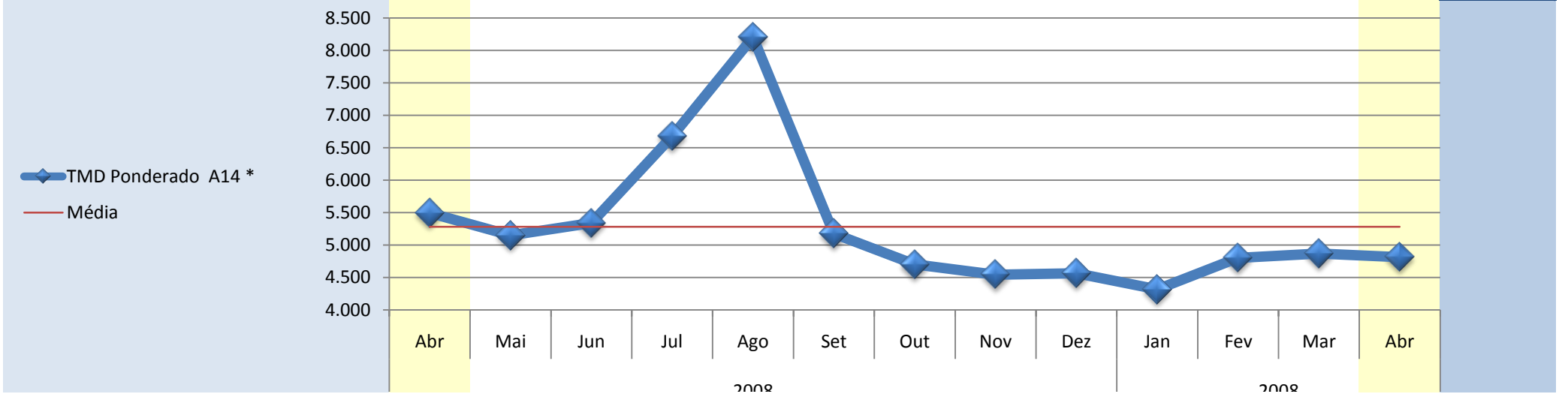
A12	2008									2008				Var. Abr 2008/2009
	Abr	Mai	Jun	Jul	Ago	Set	Out	Nov	Dez	Jan	Fev	Mar	Abr	
Pt Vasco da Gama (Lisboa - Montijo)	66.054	63.857	63.814	67.959	67.000	65.949	66.098	64.504	62.318	59.630	59.457	62.527	65.294	-1,16%
Montijo - Pinhal Novo	20.132	19.398	20.648	23.190	23.943	20.899	19.866	19.067	18.728	17.133	18.662	19.315	20.550	2,04%
Pinhal Novo - Nó com a A 2	19.384	18.703	20.012	22.566	23.541	20.202	19.096	18.357	18.030	16.417	17.956	18.573	19.845	2,33%
Nó com a A 2 - Setúbal	31.967	30.891	30.223	31.881	28.718	32.220	33.627	31.582	29.899	29.235	30.319	31.913	30.902	-3,45%
<b>TMD Ponderado A12</b>	<b>40.719</b>	<b>39.340</b>	<b>39.826</b>	<b>42.937</b>	<b>42.543</b>	<b>41.068</b>	<b>40.812</b>	<b>39.541</b>	<b>38.264</b>	<b>36.319</b>	<b>37.080</b>	<b>38.856</b>	<b>40.471</b>	<b>-0,61%</b>



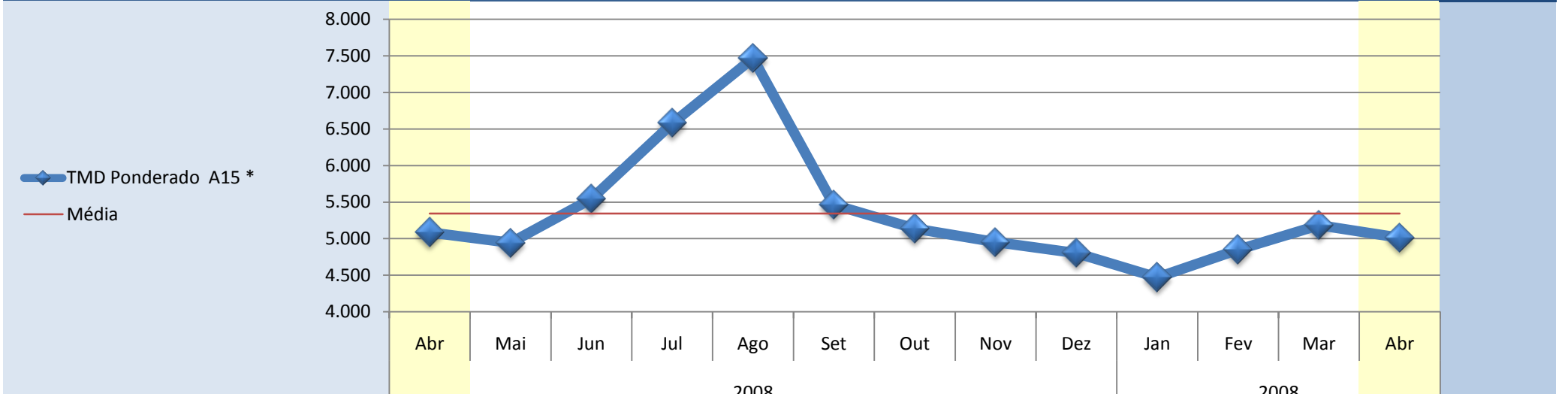
A13	2008									2008			Var. Abr 2008/2009	
	Abr	Mai	Jun	Jul	Ago	Set	Out	Nov	Dez	Jan	Fev	Mar		Abr
Nó com a A2 e A 6 - Pegões	4.576	4.735	5.319	7.707	12.261	6.062	4.357	3.971	4.051	3.037	3.331	3.433	5.744	20,34%
Pegões - Santo Estevão	4.649	4.823	5.410	7.673	12.368	6.162	4.447	4.049	4.127	3.048	3.351	3.468	5.809	19,98%
Santo Estevão - Nó com A 10	4.904	5.094	5.649	7.470	12.445	6.387	4.732	4.366	4.406	3.784	4.201	4.314	6.074	19,25%
Nó com A 10 - Salvaterra	3.928	4.065	4.455	5.739	9.406	4.971	3.754	3.545	3.561	3.518	3.947	4.029	4.766	17,58%
Salvaterra - Almeirim	3.922	4.067	4.450	5.703	9.394	4.969	3.750	3.529	3.548	3.460	3.891	3.960	4.753	17,48%
<b>TMD Ponderado A13</b>	<b>4.322</b>	<b>4.481</b>	<b>4.965</b>	<b>6.696</b>	<b>10.919</b>	<b>5.600</b>	<b>4.136</b>	<b>3.833</b>	<b>3.876</b>	<b>3.358</b>	<b>3.737</b>	<b>3.831</b>	<b>5.326</b>	<b>18,84%</b>



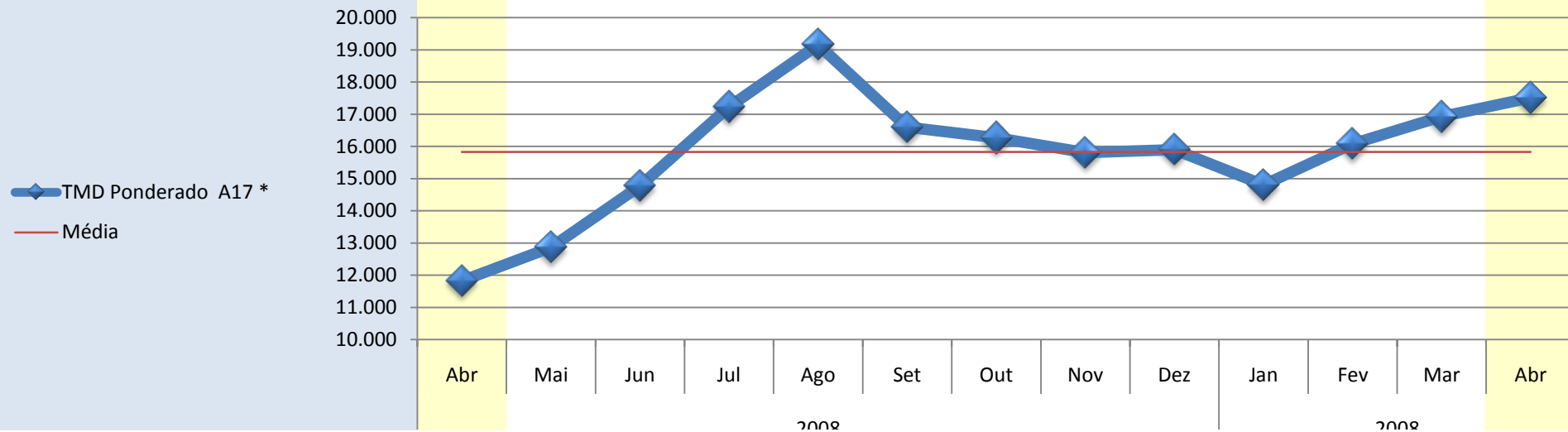
A14 *	2008									2008			Var. Abr 2008/2009	
	Abr	Mai	Jun	Jul	Ago	Set	Out	Nov	Dez	Jan	Fev	Mar		Abr
Santa Eulália - Montemor-o-Novo	4.615	4.373	4.677	6.022	7.672	4.445	3.968	3.816	3.849	3.640	4.140	4.122	4.079	-13,15%
Montemor-o-Novo - Nó com a EN 335	4.946	4.615	4.841	6.177	7.726	4.664	4.186	4.027	4.044	3.829	4.297	4.343	4.294	-15,18%
Nó com a EN 335 - Ançã	5.140	4.797	4.992	6.253	7.775	4.800	4.310	4.184	4.241	3.998	4.460	4.511	4.462	-15,20%
Ançã - Coimbra Norte	8.229	7.748	7.728	9.250	10.589	7.732	7.292	7.052	7.004	6.636	7.189	7.429	7.334	-12,20%
<b>TMD Ponderado A14 *</b>	<b>5.495</b>	<b>5.151</b>	<b>5.340</b>	<b>6.681</b>	<b>8.204</b>	<b>5.177</b>	<b>4.701</b>	<b>4.542</b>	<b>4.565</b>	<b>4.317</b>	<b>4.802</b>	<b>4.871</b>	<b>4.815</b>	<b>-14,13%</b>



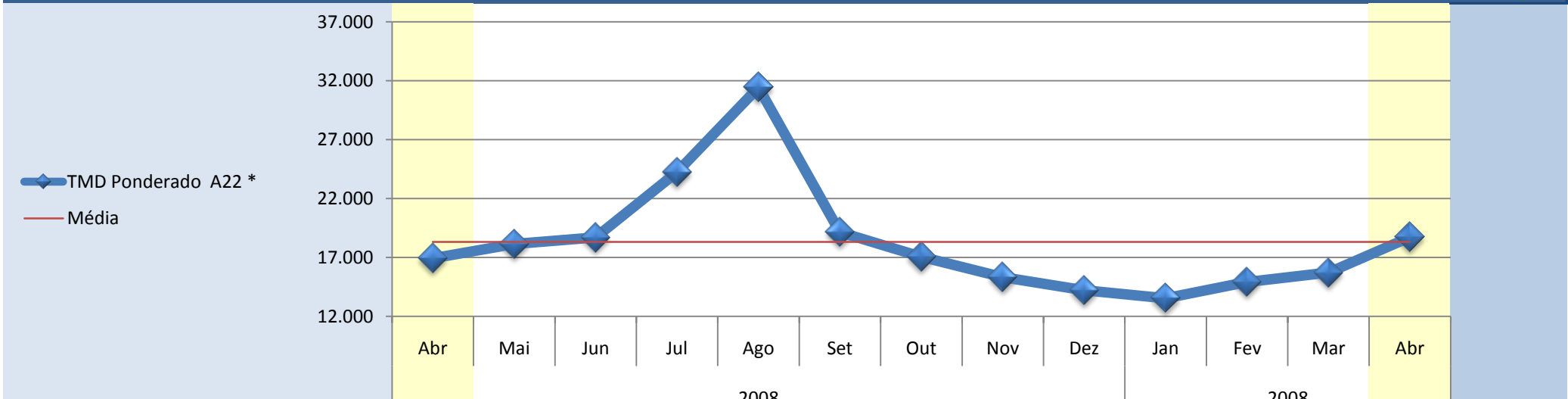
A15 *	2008										2008			Var. Abr 2008/2009
	Abr	Mai	Jun	Jul	Ago	Set	Out	Nov	Dez	Jan	Fev	Mar	Abr	
A-dos-Negros - A-dos-Francos	5.042	4.903	5.656	6.957	8.141	5.482	5.022	4.799	4.751	4.438	4.845	5.089	5.031	-0,22%
A-dos-Francos - Rio Maior Oeste	4.429	4.058	4.844	5.772	6.396	4.703	4.426	4.210	4.081	3.830	4.244	4.511	4.175	-6,08%
Rio Maior Oeste - Rio Maior Este	4.005	3.917	4.483	5.496	6.485	4.351	3.995	3.851	3.707	3.439	3.770	4.031	3.991	-0,36%
Rio Maior Este - Malaqueijo	5.518	5.431	5.928	6.866	7.668	5.888	5.627	5.454	5.243	4.873	5.245	5.658	5.447	-1,31%
Malaqueijo - Santarém	5.505	5.430	5.890	6.826	7.648	5.904	5.632	5.473	5.263	4.882	5.236	5.654	5.463	-0,76%
<b>TMD Ponderado A15 *</b>	<b>5.085</b>	<b>4.943</b>	<b>5.544</b>	<b>6.576</b>	<b>7.467</b>	<b>5.463</b>	<b>5.139</b>	<b>4.953</b>	<b>4.802</b>	<b>4.471</b>	<b>4.849</b>	<b>5.185</b>	<b>5.013</b>	<b>-1,42%</b>



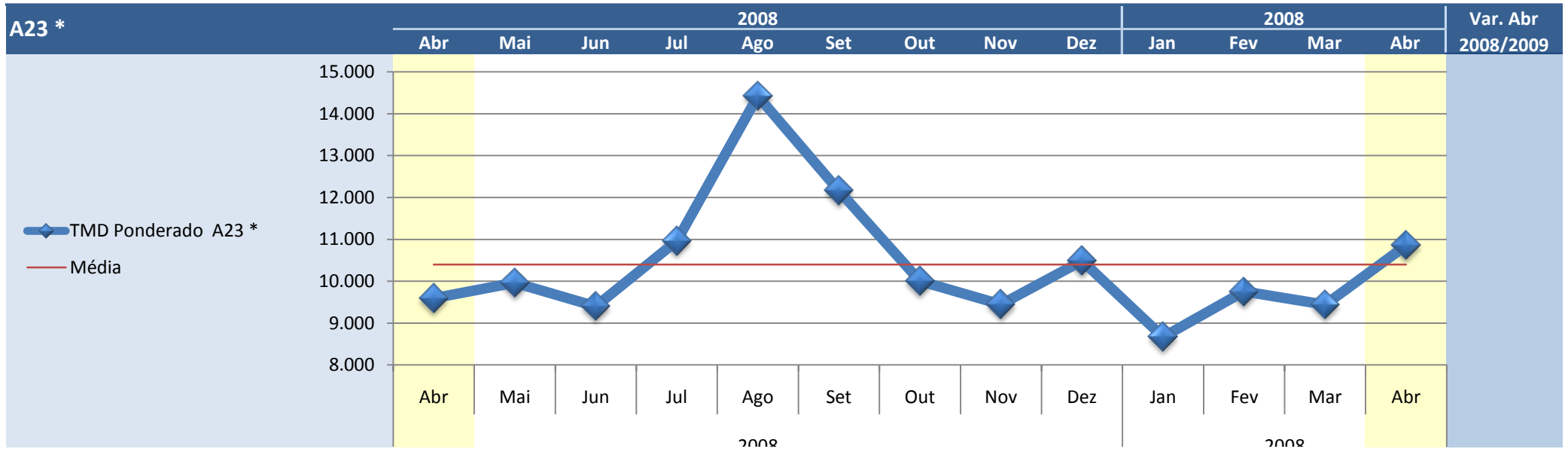
A17 *	2008									2008				Var. Abr 2008/2009
	Abr	Mai	Jun	Jul	Ago	Set	Out	Nov	Dez	Jan	Fev	Mar	Abr	
Mira - Ponte de Vagos	7.185	8.611	10.728	12.800	15.170	12.337	11.903	11.495	11.593	10.680	11.827	12.505	13.113	45,21%
Ponte de Vagos - Vagos	8.793	10.141	12.225	14.540	16.770	13.992	13.641	13.252	13.383	12.372	13.565	14.354	14.985	41,32%
Vagos - Ílhavo	11.687	12.773	14.696	17.148	19.149	16.562	16.307	15.876	15.982	14.921	16.155	17.030	17.604	33,61%
Ílhavo - Aveiro Sul	15.483	16.313	18.168	20.851	22.333	20.229	20.107	19.598	19.629	18.470	19.873	20.881	21.450	27,82%
Aveiro Sul - S.Bernardo	16.608	17.161	18.769	21.576	23.016	20.736	20.420	19.869	19.947	18.628	20.066	21.004	21.558	22,96%
S.Bernardo - Aveiro Nascente / Estádio	17.557	18.024	19.674	22.536	23.956	21.632	21.311	20.742	20.814	19.488	20.956	21.938	22.502	21,98%
<b>TMD Ponderado A17 *</b>	<b>11.825</b>	<b>12.861</b>	<b>14.768</b>	<b>17.229</b>	<b>19.161</b>	<b>16.595</b>	<b>16.266</b>	<b>15.807</b>	<b>15.903</b>	<b>14.801</b>	<b>16.082</b>	<b>16.923</b>	<b>17.512</b>	<b>32,48%</b>



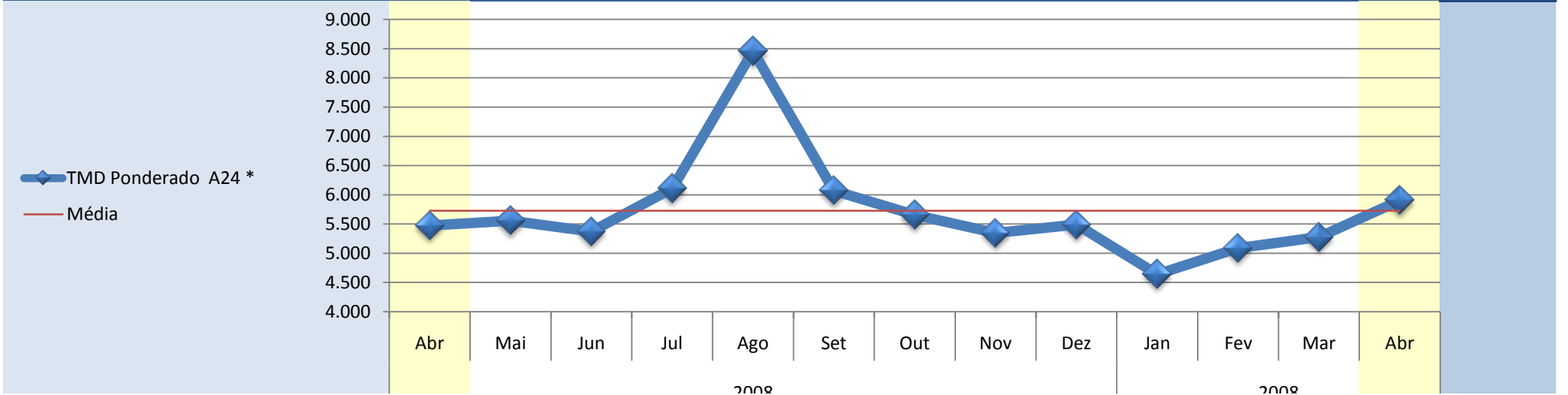
A22 *	2008									2008				Var. Abr 2008/2009
	Abr	Mai	Jun	Jul	Ago	Set	Out	Nov	Dez	Jan	Fev	Mar	Abr	
Lagos - Odeáxere	7.022	8.124	8.316	11.051	15.582	8.991	7.735	6.495	5.790	5.733	6.397	6.753	8.304	15,43%
Odeáxere - Mexilhoeira	9.088	9.979	10.198	13.556	18.807	10.883	9.523	8.128	7.248	7.102	7.905	8.409	10.325	11,98%
Mexilhoeira - Alvor	9.883	10.876	11.095	14.657	20.012	12.000	10.462	10.064	8.066	8.190	8.829	9.394	11.753	15,91%
Alvor - Portimão	10.371	11.337	11.714	15.426	21.242	12.548	11.133	9.967	8.349	8.198	9.000	9.579	11.940	13,14%
Portimão - Lagoa / Silves	17.187	18.190	18.839	24.252	33.186	19.672	17.746	16.066	14.060	13.821	15.042	16.049	19.098	10,01%
Lagoa / Silves - Alcantarilha	22.181	23.433	24.352	30.761	41.224	25.189	22.862	20.625	18.646	18.097	19.597	20.807	24.213	8,39%
Alcantarilha - Algoz	22.112	23.377	24.454	31.086	42.150	25.295	21.940	19.506	17.599	17.397	19.023	20.282	23.879	7,40%
Algoz - Guia	22.555	23.850	25.039	32.205	43.500	25.729	22.967	20.431	18.246	17.691	19.461	20.696	24.496	7,92%
Guia - Nó com a A2	26.226	27.779	28.923	37.635	49.347	29.565	26.046	22.835	21.572	20.334	22.332	23.524	28.436	7,77%
Nó com a A2 - Boliqueime	27.254	28.750	29.783	37.756	47.001	30.287	27.265	24.296	22.723	21.324	23.568	24.907	29.571	7,84%
Boliqueime - Loulé	28.724	30.265	31.138	38.403	46.147	32.097	28.948	25.894	24.089	22.856	25.129	26.672	30.854	6,90%
Loulé - Faro / Aeroporto	28.430	30.162	30.842	37.927	44.333	31.870	28.938	25.575	23.754	22.825	24.972	26.680	30.831	7,79%
Faro / Aeroporto - Faro / Estói	16.182	16.857	17.552	22.901	29.216	17.809	15.755	14.576	13.645	12.992	14.602	15.219	17.747	8,82%
Faro / Estói - Olhão	15.367	16.340	16.887	22.593	28.871	17.157	15.006	13.588	12.895	12.243	13.633	14.275	16.994	9,58%
Olhão - Tavira	14.668	15.788	16.269	21.870	27.819	16.474	14.453	13.075	12.547	11.778	13.093	13.636	16.275	9,87%
Tavira - Monte Gordo	9.299	10.521	10.648	14.889	20.232	10.412	9.248	8.391	8.392	7.589	8.487	8.752	10.925	14,88%
Monte Gordo - Castro Marim	9.082	10.657	10.296	14.076	18.479	10.143	9.119	8.346	8.334	7.512	8.406	8.544	10.598	14,30%
<b>TMD Ponderado A22 *</b>	<b>16.934</b>	<b>18.141</b>	<b>18.695</b>	<b>24.258</b>	<b>31.447</b>	<b>19.150</b>	<b>17.068</b>	<b>15.336</b>	<b>14.213</b>	<b>13.536</b>	<b>14.924</b>	<b>15.731</b>	<b>18.732</b>	<b>9,60%</b>



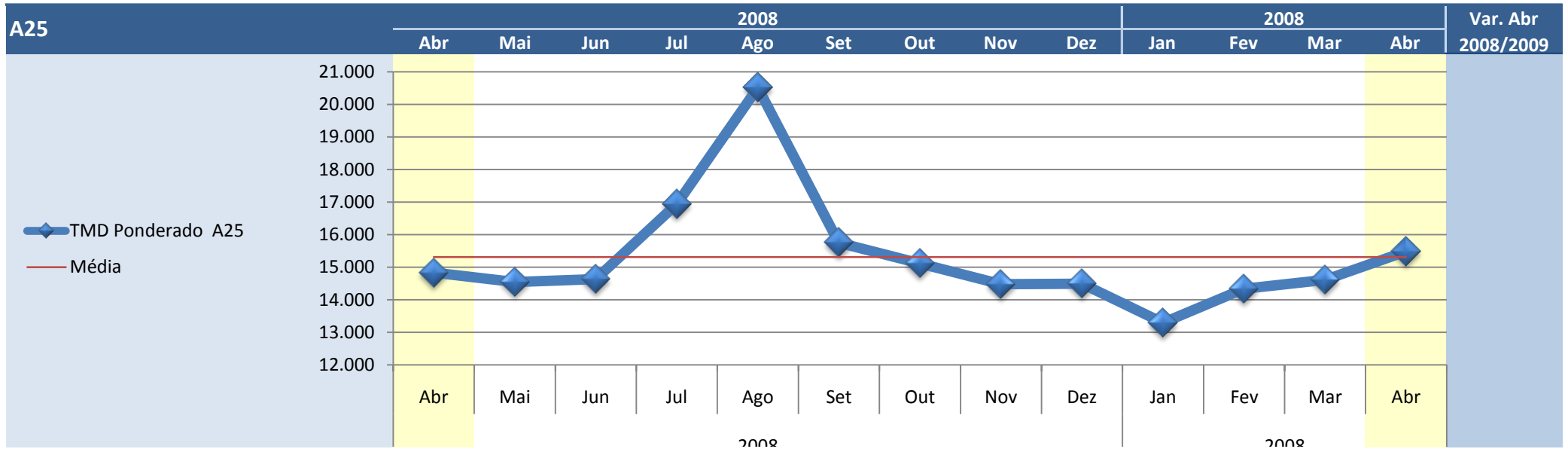
A23 *	2008									2008				Var. Abr 2008/2009
	Abr	Mai	Jun	Jul	Ago	Set	Out	Nov	Dez	Jan	Fev	Mar	Abr	
Abrantes O - Abrantes E	12.830	13.401	12.767	16.000	18.422	15.976	13.069	12.841	13.938	11.487	13.121	12.548	14.496	11,49%
Abrantes E - Mouriscas	12.572	12.927	12.314	14.052	17.628	15.254	13.033	12.316	13.547	11.188	12.675	12.281	14.083	10,73%
Mouriscas - Mação	10.855	9.885	9.373	12.210	14.648	12.323	11.469	9.830	10.693	8.470	9.768	9.310	11.019	1,49%
Mação - Gavião	8.879	8.849	8.420	10.230	13.674	11.316	9.835	8.810	9.685	7.542	8.774	8.278	9.977	11,01%
Gavião - Envendos	8.313	8.740	8.288	9.650	13.522	11.174	9.184	8.615	9.552	7.424	8.640	8.139	9.841	15,53%
Envendos - Gardete	8.164	8.570	8.120	9.469	13.264	10.963	9.110	8.502	9.405	7.321	8.482	7.931	9.615	15,09%
Gardete - Riscada	8.490	9.378	8.931	9.879	14.360	11.882	9.076	8.829	10.213	7.923	9.182	8.654	10.467	18,89%
Riscada - Fratel	8.862	9.304	8.855	10.253	14.270	11.795	9.102	8.750	10.120	7.834	9.086	8.568	10.372	14,56%
Fratel - Perdigão	8.848	9.357	8.914	10.230	14.280	11.813	9.087	8.783	10.157	7.877	9.130	8.615	10.421	15,09%
Perdigão - Alvaiade	9.555	10.766	10.244	10.986	15.756	13.240	9.820	10.110	11.612	9.308	10.600	10.083	11.871	19,51%
Alvaiade - Sarnadas / Retaxo	10.525	11.199	10.721	11.994	16.177	13.676	10.818	10.544	12.057	9.711	11.062	10.546	12.332	14,65%
Sarnadas / Retaxo - C. Branco S	10.732	11.232	10.764	12.191	16.219	13.715	11.036	10.566	12.090	9.749	11.112	10.599	12.384	13,34%
C. Branco S - Hospital	9.740	9.071	8.686	11.271	14.115	11.644	10.097	8.458	9.785	7.782	9.008	8.482	10.107	3,63%
Hospital - C. Branco N	8.276	8.190	7.811	9.751	13.223	10.786	8.474	7.629	8.980	7.015	8.112	7.632	9.202	10,06%
C. Branco N - Alcains	10.348	13.625	12.842	11.814	18.000	15.745	10.659	13.072	14.604	12.450	13.672	13.380	14.672	29,47%
Alcains - Lardosa	11.786	10.982	10.362	13.074	15.208	13.016	12.200	10.437	11.665	9.813	10.954	10.677	11.804	0,15%
Lardosa - Soalheira	10.437	10.799	10.179	11.708	14.935	12.751	10.793	10.195	11.332	9.603	10.658	10.435	11.537	9,53%
Soalheira - Castelo Novo	10.237	10.554	9.955	11.509	14.686	12.518	10.562	9.907	11.012	9.356	10.403	10.201	11.272	9,18%
Castelo Novo - Fundão	10.440	11.139	10.495	11.736	15.400	13.219	10.765	10.513	11.688	10.021	11.094	10.867	11.964	12,74%
Fundão - Alcaria	10.572	10.738	10.101	11.867	14.671	12.624	10.936	10.161	11.108	9.712	10.728	10.541	11.566	8,59%
Alcaria - Covilhã S	10.206	10.290	9.669	11.422	14.415	12.258	10.536	9.747	10.806	9.275	10.352	10.124	11.153	8,49%
Covilhã S - Covilhã N	8.237	6.827	6.435	9.478	11.182	8.987	8.512	6.295	6.906	5.720	6.411	6.337	7.534	-9,33%
Covilhã N - Belmonte S	7.821	9.309	8.597	9.063	13.404	11.266	8.117	8.718	9.428	8.105	8.902	8.809	9.957	21,45%
Belmonte S - Belmonte N	8.284	7.950	7.292	9.421	11.627	9.702	8.629	7.346	7.889	6.782	7.446	7.387	8.455	2,02%
Belmonte N - Benespera	7.890	8.489	7.789	9.000	12.214	10.244	8.208	7.871	8.406	7.290	7.955	7.950	9.008	12,41%
Benespera - Guarda	8.349	8.890	8.197	9.479	12.770	10.737	8.691	8.258	8.851	7.707	8.380	8.345	9.436	11,52%
Guarda - Pinhel	8.258	8.119	7.562	9.489	12.184	10.091	8.592	7.402	7.891	6.976	7.559	7.496	8.507	2,93%
<b>TMD Ponderado A23 *</b>	<b>9.596</b>	<b>9.964</b>	<b>9.398</b>	<b>10.965</b>	<b>14.423</b>	<b>12.162</b>	<b>10.004</b>	<b>9.446</b>	<b>10.489</b>	<b>8.669</b>	<b>9.755</b>	<b>9.439</b>	<b>10.854</b>	<b>11,59%</b>



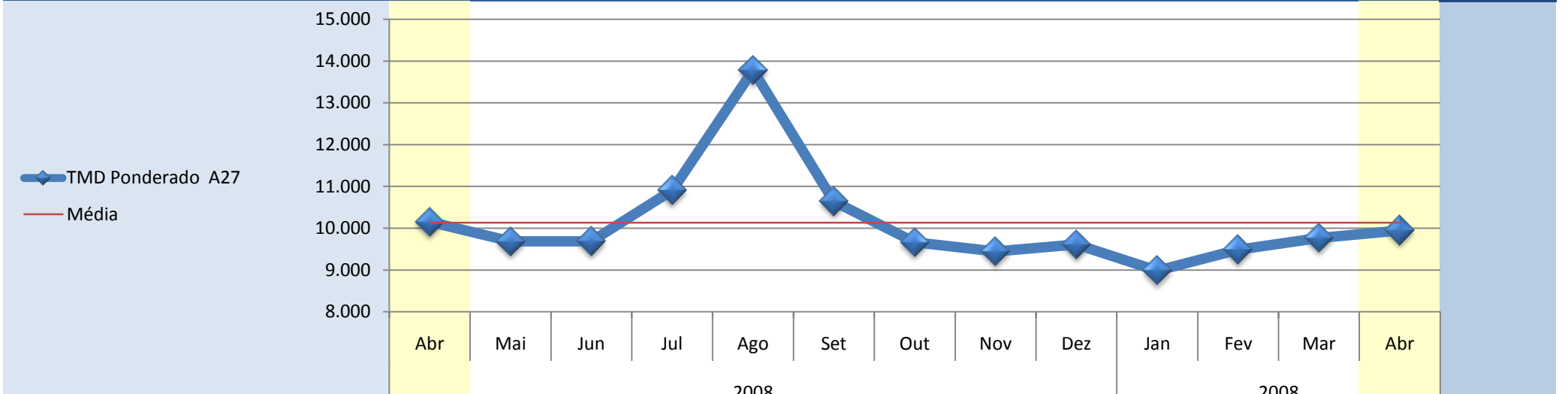
A24 *	2008									2008				Var. Abr 2008/2009
	Abr	Mai	Jun	Jul	Ago	Set	Out	Nov	Dez	Jan	Fev	Mar	Abr	
V. V. da Raia - Chaves	2.564	2.673	2.546	3.466	5.824	2.828	2.514	2.392	2.686	2.399	2.346	2.337	2.895	11,43%
Chaves - EN 103	4.732	4.743	4.493	5.538	8.478	5.032	4.696	4.472	4.649	4.168	4.335	4.413	5.052	6,33%
EN 103 - Vidago	5.135	5.139	4.883	6.033	8.932	5.518	5.178	4.939	5.033	4.455	4.652	4.785	5.463	6,00%
Vidago - Pedras Salgadas	5.462	5.485	5.250	6.446	9.409	5.887	5.533	5.237	5.304	4.702	4.928	5.087	5.802	5,85%
Pedras Salgadas - IC5 / A7	5.352	5.373	5.117	6.358	9.472	6.084	5.710	5.201	5.257	4.601	4.843	5.002	5.667	5,56%
IC5 / A7 - Vila Pouca de Aguiar	3.603	3.574	3.419	4.083	5.962	3.901	3.743	3.619	3.658	3.927	4.344	4.552	4.847	25,67%
Vila Pouca de Aguiar - Fortunho	4.533	4.534	4.374	4.950	6.740	4.908	4.784	4.478	4.503	3.869	4.328	4.580	4.840	6,35%
Fortunho - Vila Real (IP 4)	5.293	5.294	5.078	5.703	7.477	5.623	5.535	5.237	5.285	4.566	5.097	5.377	5.581	5,15%
Vila Real (IP 4) - Constantim	5.920	6.090	6.074	6.310	8.047	6.550	6.226	5.937	5.883	5.145	5.759	6.023	6.436	8,01%
Constantim - Portela	7.619	7.486	7.280	7.868	9.654	8.185	7.801	7.565	7.717	6.590	7.224	7.501	7.966	4,36%
Portela - Régua	7.658	7.583	7.341	7.911	9.665	8.252	7.857	7.613	7.724	6.637	7.260	7.558	7.915	3,25%
Régua - Armamar / Varosa	6.233	6.263	6.234	6.914	9.685	7.100	6.598	6.267	6.503	5.240	5.737	6.217	6.830	8,74%
Armamar / Varosa - Lamego	7.283	7.332	7.136	7.841	10.348	8.213	7.677	7.209	7.396	6.203	6.789	7.064	7.736	5,86%
Lamego - Mezio / Bigorne	4.798	4.968	4.861	5.433	7.579	5.548	4.940	4.578	4.763	3.836	4.371	4.503	5.209	7,89%
Mezio / Bigorne - C. Daire Norte	4.688	4.889	4.734	5.246	7.490	5.470	4.861	4.578	4.723	3.758	4.319	4.456	5.204	9,91%
C. Daire Norte - C. Daire Leste	5.223	5.453	5.318	5.801	8.139	5.966	5.382	5.075	5.185	4.131	4.760	4.947	5.694	8,27%
C. Daire Leste - C. Daire Sul	6.345	6.599	6.362	7.038	9.530	7.167	6.551	6.180	6.440	5.227	5.836	5.999	6.844	7,29%
Carvalhal - Arcas	6.211	6.440	6.210	6.903	9.425	6.991	6.396	6.011	6.302	5.089	5.697	5.834	6.659	6,73%
Arcas - EN 16	6.637	6.850	6.594	7.267	9.855	7.426	6.796	6.465	6.761	5.470	6.090	6.174	7.111	6,67%
EN 16 - IP 5	4.102	4.302	4.272	4.910	7.105	4.857	4.353	4.082	4.360	3.414	3.894	4.476	6.084	32,58%
<b>TMD Ponderado A24 *</b>	<b>5.472</b>	<b>5.555</b>	<b>5.371</b>	<b>6.108</b>	<b>8.459</b>	<b>6.072</b>	<b>5.655</b>	<b>5.345</b>	<b>5.488</b>	<b>4.640</b>	<b>5.087</b>	<b>5.277</b>	<b>5.902</b>	<b>7,29%</b>



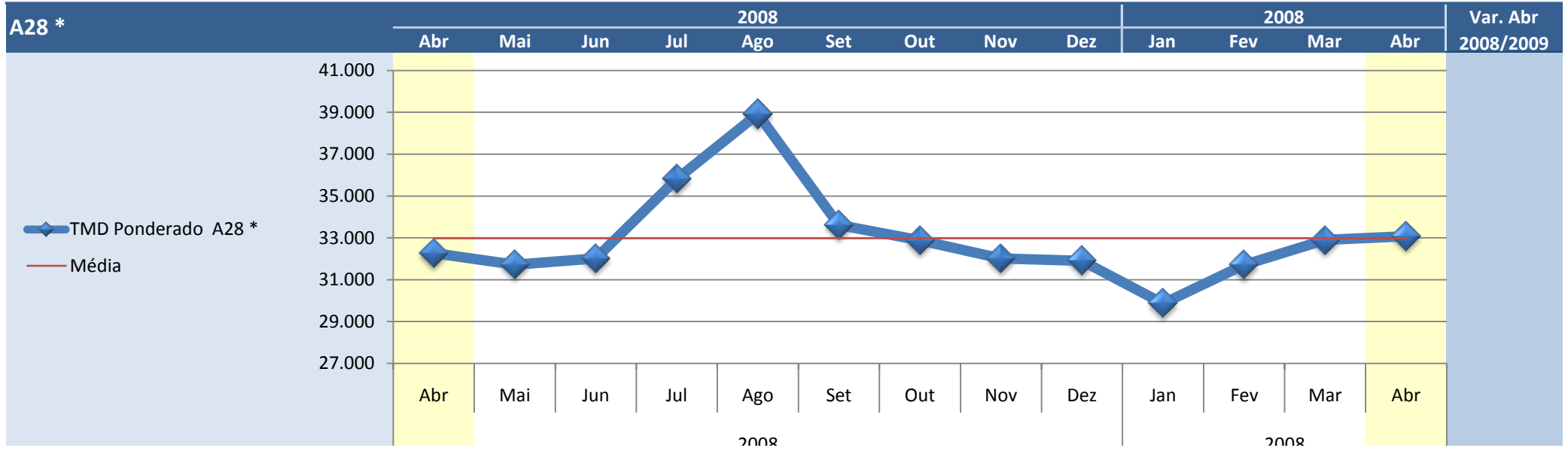
A25	2008									2008				Var. Abr 2008/2009
	Abr	Mai	Jun	Jul	Ago	Set	Out	Nov	Dez	Jan	Fev	Mar	Abr	
Barra / Zona Industrial	21.034	20.642	24.991	32.192	37.021	24.738	20.345	19.107	18.294	18.472	21.147	21.804	21.430	1,85%
Gafanha da Encarnação - Gafanha da Nazaré	21.034	20.642	24.991	32.192	37.021	24.738	20.345	19.107	18.294	18.472	21.147	21.804	21.430	1,85%
Gafanha da Nazaré - Pirâmides	30.229	29.325	33.140	40.134	44.072	33.364	29.764	28.298	27.830	27.092	30.517	31.103	29.591	-2,15%
Pirâmides - Esgueira	24.568	23.648	25.122	29.355	31.434	25.667	24.009	22.912	22.355	21.449	23.412	24.391	24.185	-1,59%
Esgueira - Aveiro Nascente / Estádio	30.845	28.788	28.800	32.023	32.564	30.159	29.949	29.202	28.772	27.204	28.999	30.424	30.295	-1,81%
Aveiro Nascente - Estádio	36.251	33.722	37.319	39.807	43.471	36.001	38.789	39.002	38.603	36.075	38.392	40.367	41.536	12,72%
Estádio - Angeja	36.251	33.722	37.319	39.807	43.471	36.001	38.789	39.002	38.603	36.075	38.392	40.367	41.536	12,72%
Angeja - Albergaria	31.007	30.212	31.774	35.917	37.463	34.172	33.951	32.991	32.403	29.637	32.690	34.166	35.060	11,56%
Albergaria - IC 2	23.677	22.470	22.890	26.278	29.328	24.739	23.803	22.942	22.998	20.990	22.764	23.321	24.197	2,15%
IC 2 - Carvoeiro	18.680	18.036	18.373	21.281	24.801	19.873	18.910	18.187	18.320	16.542	17.999	18.357	19.281	3,11%
Carvoeiro - Talhadas	15.831	15.322	15.573	18.259	21.689	16.972	16.042	15.400	15.439	13.844	15.209	15.423	16.380	3,35%
Talhadas - Reigoso	17.405	16.927	17.092	19.807	23.170	18.628	17.644	16.899	16.782	15.206	16.584	16.873	17.840	2,44%
Reigoso - Cambarinho	16.408	15.729	16.062	18.721	22.267	17.614	16.621	15.931	17.408	15.070	15.676	15.978	16.945	3,17%
Cambarinho - Vouzela P	15.573	15.143	15.185	17.719	21.195	16.690	15.834	15.087	15.051	13.499	14.917	15.166	16.086	3,19%
Vouzela P - Vouzela N	15.525	15.084	15.012	17.463	20.372	16.529	15.737	15.289	15.291	13.881	14.994	15.208	15.994	2,93%
Vouzela N - Ventosa	15.159	14.712	14.621	17.037	19.942	16.130	15.329	14.885	14.955	13.599	14.639	14.825	15.567	2,62%
Ventosa - Boa Aldeia P	15.208	14.768	14.672	17.082	19.999	15.922	15.415	15.097	15.144	13.744	14.723	14.876	15.655	2,85%
Boa Aldeia P - Boa Aldeia N	11.471	11.215	11.084	13.061	15.933	12.361	11.756	11.266	11.485	10.343	11.319	11.350	12.171	5,75%
Boa Aldeia N - Faíl	11.471	11.215	11.084	13.061	15.933	12.361	11.756	11.266	11.485	10.343	11.319	11.350	12.171	5,75%
Faíl - Viseu Sul	14.955	14.754	14.447	16.567	19.489	15.989	15.732	15.049	15.127	13.928	15.177	15.328	16.010	6,59%
Viseu Sul - Nó com a EN 2	9.132	9.152	8.886	10.728	13.522	9.816	9.599	8.382	9.036	8.106	8.912	9.045	9.774	6,57%
Nó com a EN 2 - Caçador	12.820	12.730	12.353	14.417	17.147	13.556	13.185	12.637	12.478	11.384	12.298	12.542	13.246	3,22%
Caçador - Fagilde	17.815	17.609	17.011	19.276	22.136	18.892	18.266	17.608	17.549	16.098	17.211	17.481	18.099	1,57%
Fagilde - Mangualde	17.208	16.981	16.448	18.656	21.515	18.219	17.629	17.070	17.073	15.607	16.726	16.975	17.646	2,48%
Mangualde - Chãs Tavares	11.238	11.432	11.027	11.500	16.122	12.234	11.675	11.014	10.966	9.950	10.814	10.920	11.768	4,51%
Chãs Tavares - F. Algodres	10.690	10.749	10.337	12.332	15.247	11.434	10.933	10.277	10.192	9.253	10.091	10.188	10.995	2,77%
F. Algodres - Cel. da Beira	10.574	10.635	10.192	12.069	14.681	11.260	10.838	10.177	10.018	9.169	9.984	10.107	10.891	2,91%
Cel. da Beira - Nó com EN 17	9.958	10.021	9.533	11.033	13.684	10.913	10.313	9.743	9.677	8.903	9.659	9.785	10.562	5,71%
Nó com EN 17 - Ratoeira P	11.318	11.223	10.748	12.729	15.365	11.861	11.539	10.889	10.665	9.911	10.636	10.694	11.550	2,01%
Ratoeira P - Ratoeira N	13.059	13.202	12.658	14.798	18.154	13.676	13.495	12.873	12.788	11.676	12.556	12.656	13.745	4,99%
Ratoeira Nascente - Guarda	13.471	13.482	12.968	15.101	18.562	14.089	13.857	13.234	13.235	12.048	12.875	13.047	14.120	4,60%
Guarda - Pinhel	10.478	10.578	10.128	12.173	15.904	11.049	10.567	10.023	10.211	9.144	9.838	9.875	11.077	5,41%
Pinhel - Pínzio	9.102	9.356	8.856	11.754	16.341	9.817	8.903	8.348	8.505	7.800	8.088	8.030	9.406	3,23%
Pínzio - Alto de Leomil	8.795	8.869	8.295	5.781	14.578	9.425	8.579	8.006	8.116	7.454	7.721	7.685	9.034	2,65%
Alto de Leomil - V. Formoso	8.035	8.241	7.795	10.640	14.992	8.605	7.785	7.264	7.324	6.811	6.892	6.873	8.174	1,70%
<b>TMD Ponderado A25</b>	<b>14.831</b>	<b>14.545</b>	<b>14.632</b>	<b>16.942</b>	<b>20.515</b>	<b>15.751</b>	<b>15.116</b>	<b>14.476</b>	<b>14.492</b>	<b>13.290</b>	<b>14.338</b>	<b>14.612</b>	<b>15.483</b>	<b>4,21%</b>



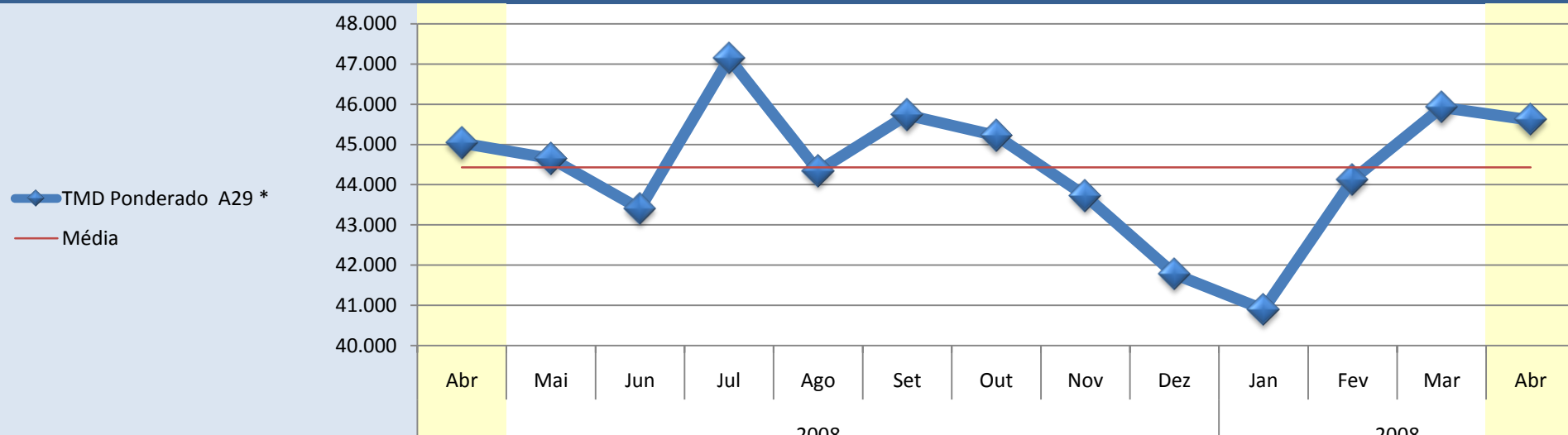
A27	2008									2008				Var. Abr 2008/2009
	Abr	Mai	Jun	Jul	Ago	Set	Out	Nov	Dez	Jan	Fev	Mar	Abr	
Meadela - Nogueira	12.176	11.747	11.766	13.205	16.590	12.837	11.748	11.496	11.804	11.063	11.633	11.956	12.075	-0,84%
Nogueira - Lanheses	11.439	10.937	10.971	12.214	15.300	12.088	11.000	10.761	10.943	10.291	10.826	11.111	11.215	-1,99%
Lanheses - Estorãos	9.991	9.506	9.511	10.739	13.501	10.530	9.440	9.232	9.369	8.746	9.275	9.532	9.787	-2,09%
Estorãos - Arcozelo	9.713	9.250	9.249	10.405	13.128	10.278	9.159	8.929	9.079	8.473	8.984	9.230	9.468	-2,59%
Arcozelo - Ponte de Lima	6.771	6.282	6.245	7.162	9.414	6.739	6.269	6.118	6.138	5.654	5.974	6.266	6.460	-4,81%
<b>TMD Ponderado A27</b>	<b>10.154</b>	<b>9.684</b>	<b>9.689</b>	<b>10.906</b>	<b>13.784</b>	<b>10.640</b>	<b>9.661</b>	<b>9.444</b>	<b>9.614</b>	<b>8.984</b>	<b>9.483</b>	<b>9.766</b>	<b>9.948</b>	<b>-2,07%</b>



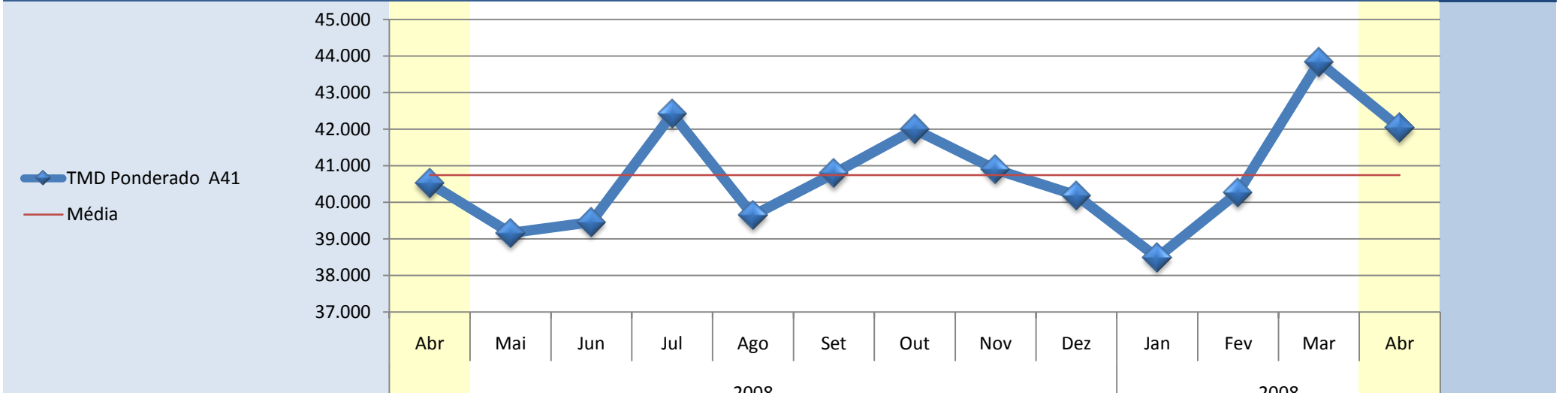
A28 *	2008									2008				Var. Abr 2008/2009
	Abr	Mai	Jun	Jul	Ago	Set	Out	Nov	Dez	Jan	Fev	Mar	Abr	
Exponor - Freixieiro (TIR)	89.654	87.198	87.048	93.642	87.099	93.347	97.538	95.769	94.573	88.486	91.487	93.946	93.319	3,93%
Freixieiro - Perafita	75.253	73.435	72.445	78.368	76.347	76.232	77.844	76.530	75.350	70.343	73.144	75.402	74.946	-0,41%
Perafita - IC 24	66.854	65.902	64.912	70.769	69.841	68.844	70.430	69.930	70.029	64.578	66.978	69.389	69.499	3,81%
IC 24 - Angeiras	66.611	65.381	64.761	71.837	71.378	68.860	70.049	69.378	69.518	64.231	66.956	69.323	69.301	3,88%
Angeiras - Modivas	68.043	67.034	67.637	75.117	76.333	69.946	69.354	68.237	68.157	63.938	67.002	69.638	69.574	2,20%
Modivas - EN 104	60.472	59.896	59.722	66.324	67.883	62.281	61.729	60.871	60.881	56.821	59.385	61.801	61.865	2,25%
EN 104 - Vila do Conde	53.116	52.154	51.912	57.649	59.374	54.296	53.755	52.741	52.474	49.455	52.282	54.056	53.912	1,48%
Vila do Conde - Póvoa do Varzim	55.489	54.439	54.704	60.268	62.922	56.760	56.208	54.998	54.951	51.753	54.494	56.633	56.422	1,65%
Póvoa do Varzim - Estela	48.061	46.947	48.883	55.252	62.292	49.479	47.562	46.114	45.902	43.496	46.707	48.405	48.211	0,31%
Estela - Apúlia	35.151	34.461	35.226	39.814	44.641	36.752	35.361	34.266	34.053	32.248	34.780	36.167	35.963	2,26%
Apúlia - Esposende	31.342	30.799	31.541	35.925	41.391	33.059	31.404	30.420	30.350	28.503	30.629	31.889	32.119	2,42%
Esposende - Antas	26.001	25.637	26.657	30.333	36.280	27.717	26.135	25.016	24.883	23.234	25.221	26.292	26.696	2,60%
Antas - Neiva	20.646	20.580	21.072	23.978	28.787	22.412	20.982	20.104	19.938	18.504	20.009	20.995	21.464	3,81%
Neiva - Darque	20.794	20.824	21.191	23.946	28.413	22.520	21.211	20.345	20.263	18.814	20.318	21.217	21.687	4,12%
Darque - Viana do Castelo	25.660	25.669	25.032	28.909	33.038	27.355	26.137	25.078	24.857	23.376	25.171	25.983	26.388	2,76%
Viana do Castelo - Meadela	34.588	34.501	34.659	38.930	43.963	36.203	35.249	33.995	34.975	32.373	34.376	35.223	35.764	3,29%
Meadela - Outeiro	16.233	16.803	16.963	19.294	23.724	18.147	17.607	16.857	17.102	15.830	17.043	17.573	18.141	10,52%
Outeiro - EN 305	7.743	9.179	9.728	11.363	14.261	10.276	9.710	9.328	9.310	8.616	9.469	9.825	10.164	23,82%
EN 305 - Riba de Ancora	7.375	9.109	9.405	10.980	13.835	9.907	9.250	8.863	8.830	8.134	8.973	9.310	9.640	23,50%
Riba de Ancora - Vila Praia de Âncora	6.691	8.438	8.761	10.283	13.056	9.212	8.558	8.235	8.184	7.564	8.324	8.631	8.998	25,64%
Vila Praia de Âncora - Argela	2.833	6.659	6.613	7.608	9.058	7.261	6.882	6.648	6.572	6.092	6.608	6.883	7.213	60,72%
Argela - Vilar de Mouros	2.793	6.644	6.580	7.499	8.774	7.189	6.850	6.614	6.529	6.085	6.570	6.863	7.179	61,09%
Vilar de Mouros - V. de Mouros Norte	2.793	6.031	6.089	6.697	7.685	6.537	6.205	5.963	5.894	5.493	5.916	6.172	6.464	56,79%
<b>TMD Ponderado A28 *</b>	<b>32.269</b>	<b>31.719</b>	<b>32.013</b>	<b>35.812</b>	<b>38.920</b>	<b>33.613</b>	<b>32.886</b>	<b>32.017</b>	<b>31.906</b>	<b>29.866</b>	<b>31.708</b>	<b>32.899</b>	<b>33.075</b>	<b>2,44%</b>



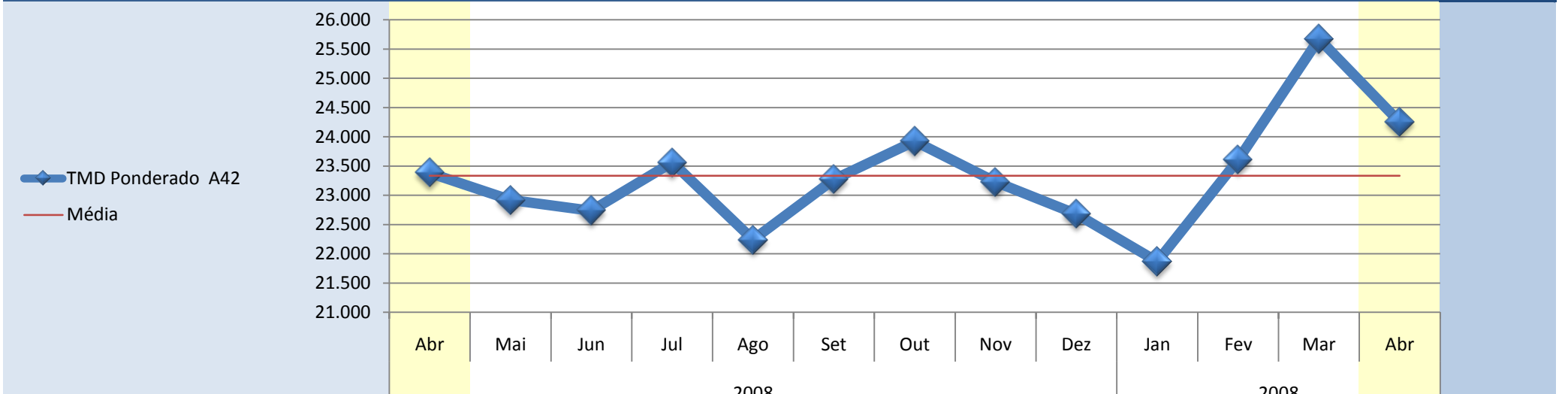
A29 *	2008									2008				Var. Abr 2008/2009
	Abr	Mai	Jun	Jul	Ago	Set	Out	Nov	Dez	Jan	Fev	Mar	Abr	
Lig. EN 109 / A 1 (Estarreja) - Ovar Sul	26.850	27.627	26.944	28.935	27.971	28.693	28.217	27.162	25.608	25.023	27.221	28.314	28.760	6,64%
Ovar Sul / Ovar - Ovar Norte / Arada	29.246	28.909	28.229	30.227	29.135	30.042	29.535	28.436	26.899	26.256	28.553	29.692	30.037	2,63%
Ovar Norte / Arada - Maceda	36.240	35.861	35.602	38.316	37.491	37.526	36.707	35.316	33.750	32.823	35.928	37.099	37.169	2,50%
Maceda - Esmoriz / Cortegaça	50.291	49.762	48.751	52.048	49.742	48.686	50.228	48.774	46.718	45.183	48.665	50.500	50.123	-0,33%
Esmoriz / Cortegaça - Esmoriz / Paramos	50.956	50.262	49.311	52.830	50.300	51.474	50.827	49.328	47.138	45.841	49.321	51.252	50.744	-0,42%
Esmoriz / Paramos - Espinho	56.333	55.440	50.998	58.301	55.275	57.016	56.052	54.760	52.709	50.891	54.751	56.255	56.160	-0,31%
Espinho - Espinho Norte / S.Felix	61.074	60.774	59.775	64.287	60.131	61.693	62.119	60.283	56.866	55.993	59.340	62.601	61.937	1,39%
Espinho Norte / S.Felix - Granja	65.588	64.774	63.442	68.180	63.417	65.631	60.657	57.212	53.360	55.426	63.227	66.660	65.853	0,40%
Granja - Miramar	70.416	69.945	67.088	73.186	67.473	71.008	71.066	69.342	67.192	64.735	68.641	71.785	70.882	0,66%
Miramar - A 44	79.463	78.733	77.775	83.924	77.764	80.468	80.103	77.737	76.417	73.480	77.416	81.265	80.113	0,81%
A 44 - Canelas	37.262	35.833	35.794	39.224	34.953	36.919	37.420	35.638	33.246	34.062	36.804	37.821	35.870	-3,88%
Canelas - Nó com o IC 2 (Hospital)	43.977	42.412	41.866	45.457	39.232	43.620	44.786	42.845	41.244	40.964	43.253	45.582	44.247	0,61%
Nó com o IC 2 - Hospital	36.024	34.716	33.469	36.643	32.432	35.903	34.486	34.372	33.222	32.973	35.101	36.229	35.275	-2,12%
Hospital - IP 1	36.024	34.716	33.469	36.643	32.432	35.903	34.486	34.372	33.222	32.973	35.101	36.229	35.275	-2,12%
<b>TMD Ponderado A29 *</b>	<b>45.034</b>	<b>44.653</b>	<b>43.402</b>	<b>47.137</b>	<b>44.340</b>	<b>45.732</b>	<b>45.220</b>	<b>43.724</b>	<b>41.776</b>	<b>40.896</b>	<b>44.122</b>	<b>45.924</b>	<b>45.609</b>	<b>1,26%</b>



A41	2008									2008				Var. Abr 2008/2009
	Abr	Mai	Jun	Jul	Ago	Set	Out	Nov	Dez	Jan	Fev	Mar	Abr	
Freixieiro / Perafita - Aeroporto	44.212	42.491	43.907	48.739	47.109	45.019	46.236	45.289	45.121	42.393	44.377	47.878	45.720	3,30%
Aeroporto - Lipor	41.958	40.540	41.437	45.551	43.483	42.697	43.709	42.551	42.533	40.175	41.703	44.863	43.269	3,03%
Lipor - Nó com a EN 13	41.859	40.421	41.318	45.411	43.355	42.577	43.634	42.473	42.426	40.115	41.662	44.897	43.285	3,29%
Nó com a EN 13 - Nó com a EN 14	44.671	43.137	43.944	48.089	45.532	45.151	46.305	45.041	44.760	42.714	44.267	47.802	46.083	3,06%
Nó com a EN 14 - Nó com a EN 107	45.574	43.636	43.902	47.948	44.028	46.028	47.363	45.962	44.730	42.270	42.914	48.577	46.514	2,02%
Nó com a EN 107 - Maia	41.455	39.824	39.836	43.443	38.811	41.907	43.142	41.862	40.553	38.932	40.523	44.213	42.543	2,56%
Maia - Alfena	52.640	51.141	50.827	53.638	48.040	52.392	54.033	51.963	50.821	49.867	52.717	56.182	54.613	3,61%
Alfena - Santo Tirso	34.707	33.796	33.697	35.179	33.135	34.754	35.917	35.174	34.414	33.267	35.176	38.473	36.581	5,12%
Santo Tirso - Ermida	32.237	31.259	31.115	32.355	30.863	31.861	32.954	32.354	31.617	30.495	32.360	35.551	33.811	4,65%
Ermida - Nó do IC 24 / IC 25	29.656	28.897	28.930	29.564	28.640	29.761	30.678	30.097	29.386	28.231	30.079	32.880	31.360	5,43%
<b>TMD Ponderado A41</b>	<b>40.518</b>	<b>39.162</b>	<b>39.456</b>	<b>42.419</b>	<b>39.644</b>	<b>40.789</b>	<b>41.993</b>	<b>40.901</b>	<b>40.191</b>	<b>38.493</b>	<b>40.266</b>	<b>43.832</b>	<b>42.038</b>	<b>3,62%</b>

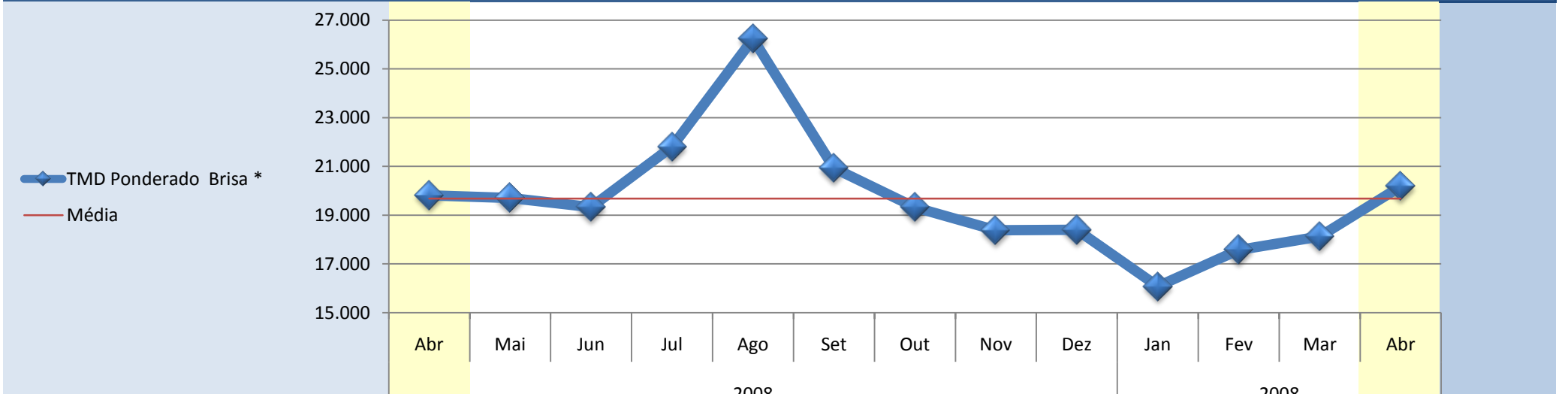


A42	2008									2008				Var. Abr 2008/2009
	Abr	Mai	Jun	Jul	Ago	Set	Out	Nov	Dez	Jan	Fev	Mar	Abr	
Nó do IC 24/IC 25 - Serôa	29.766	29.015	28.921	29.999	28.465	29.750	30.664	30.090	29.358	28.213	30.063	32.868	31.153	4,45%
Serôa - Paços Ferreira Oeste	30.313	29.658	29.084	29.593	27.783	29.174	29.947	28.351	27.312	27.574	29.497	32.132	30.619	1,00%
Paços Ferreira Oeste - Paços Ferreira Este	24.477	24.307	24.269	25.126	23.441	24.756	25.420	24.561	24.241	22.970	25.057	27.161	24.683	0,83%
Paços Ferreira (Este) - Nó da EN 106 (Sul)	23.953	23.365	23.242	24.122	22.679	23.873	24.462	23.952	23.492	22.421	24.206	26.192	24.804	3,43%
Nó da EN 106 (Sul) - Nó da EN 106 (Norte)	24.164	23.636	23.191	24.316	22.873	23.941	24.574	24.115	23.791	22.242	23.744	26.237	25.145	3,90%
Nó da EN 106 (Norte) - Nó do IP 9 (Lousada)	14.847	14.555	14.456	15.172	14.532	14.967	15.422	15.068	14.645	14.064	15.451	16.704	16.075	7,64%
<b>TMD Ponderado A42</b>	<b>23.380</b>	<b>22.920</b>	<b>22.737</b>	<b>23.563</b>	<b>22.241</b>	<b>23.271</b>	<b>23.924</b>	<b>23.228</b>	<b>22.678</b>	<b>21.866</b>	<b>23.603</b>	<b>25.673</b>	<b>24.250</b>	<b>3,59%</b>

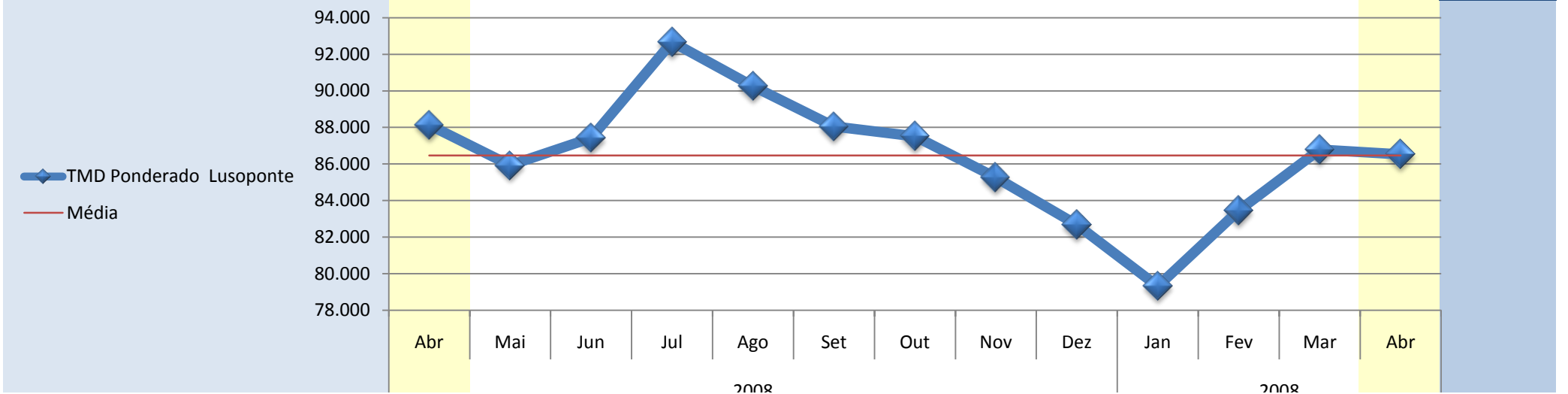


# Tráfego Médio Diário Mensal por Concessão

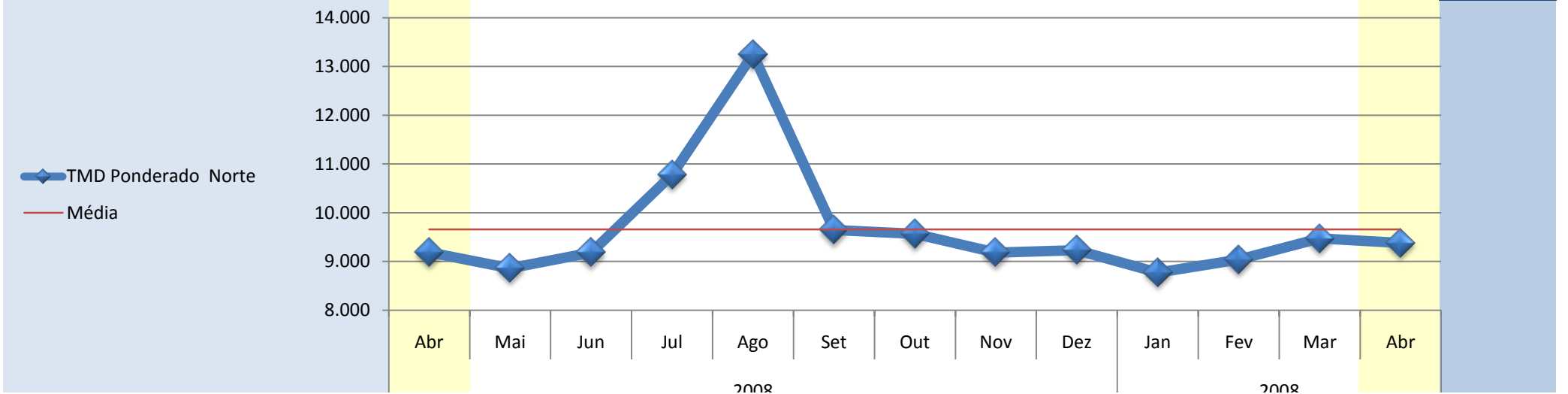
Brisa *	2008									2008				Var. Abr 2008/2009
	Abr	Mai	Jun	Jul	Ago	Set	Out	Nov	Dez	Jan	Fev	Mar	Abr	
A1	34.210	34.425	32.087	34.935	43.132	35.485	33.326	31.705	31.619	26.944	29.640	30.440	33.881	-0,97%
A2	15.362	15.471	16.986	21.532	29.955	17.790	14.264	13.420	13.949	11.970	13.527	13.697	17.305	11,23%
A3	17.531	16.710	16.117	18.031	18.884	17.928	17.327	16.419	16.227	14.872	15.708	16.585	17.469	-0,35%
A4	23.322	23.269	23.131	24.574	25.640	24.553	24.351	23.659	23.539	20.096	22.341	23.427	23.663	1,44%
A5	79.519	77.044	76.004	79.037	63.940	78.288	78.879	75.207	73.260	70.616	73.046	76.470	74.305	-7,02%
A6	5.324	5.400	5.111	5.811	6.535	5.729	5.250	5.074	5.244	4.384	4.819	4.828	5.655	5,84%
A9	27.535	26.143	25.381	26.373	22.619	26.989	28.253	27.099	25.681	24.418	26.239	27.463	27.123	-1,52%
A10	6.539	6.216	6.290	6.795	7.476	6.644	6.507	6.303	6.477	6.262	5.720	6.569	6.517	-0,33%
A12	22.330	21.545	22.415	24.776	24.792	23.008	22.460	21.422	20.806	19.399	20.838	21.675	22.454	0,55%
A13	4.322	4.481	4.965	6.696	10.919	5.600	4.136	3.833	3.876	3.358	3.737	3.831	5.326	18,84%
A14	5.495	5.151	5.340	6.681	8.204	5.177	4.701	4.542	4.565	4.317	4.802	4.871	4.815	-14,13%
<b>TMD Ponderado Brisa *</b>	<b>19.809</b>	<b>19.708</b>	<b>19.325</b>	<b>21.805</b>	<b>26.232</b>	<b>20.933</b>	<b>19.321</b>	<b>18.385</b>	<b>18.398</b>	<b>16.080</b>	<b>17.574</b>	<b>18.126</b>	<b>20.182</b>	<b>1,85%</b>



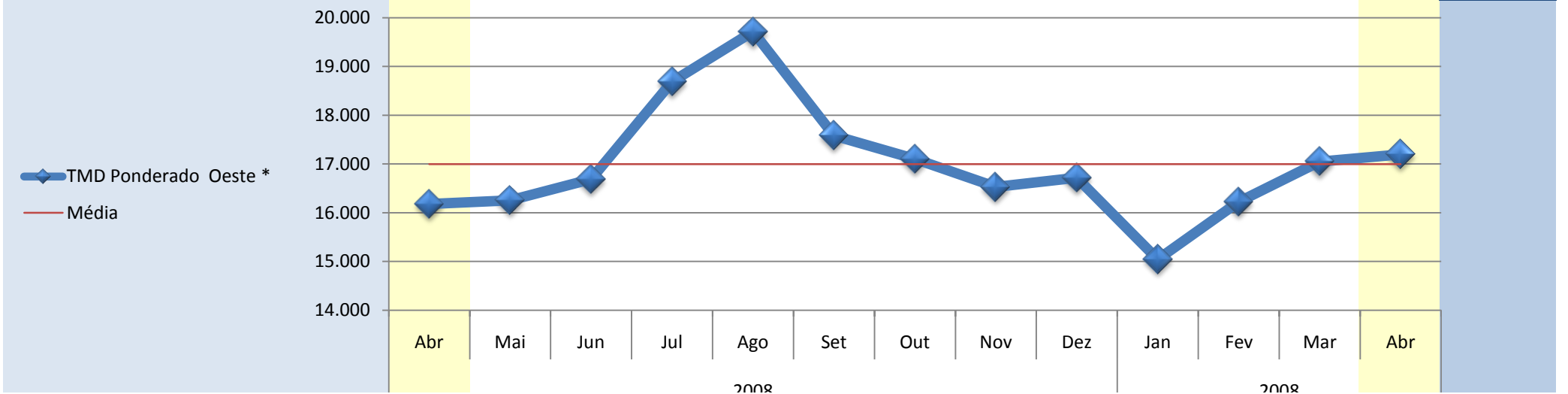
Lusoponte	2008									2008				Var. Abr 2008/2009
	Abr	Mai	Jun	Jul	Ago	Set	Out	Nov	Dez	Jan	Fev	Mar	Abr	
Pt. 25 de Abril	154.383	152.132	158.228	166.800	160.000	154.337	151.771	147.521	143.782	138.879	146.227	152.388	150.243	-2,76%
Pt. Vasco da Gama	66.054	63.857	63.814	67.959	67.000	65.949	66.098	64.504	62.318	59.457	62.527	64.930	65.294	-1,16%
<b>TMD Ponderado Lusoponte</b>	<b>88.136</b>	<b>85.926</b>	<b>87.418</b>	<b>92.669</b>	<b>90.250</b>	<b>88.046</b>	<b>87.516</b>	<b>85.258</b>	<b>82.684</b>	<b>79.313</b>	<b>83.452</b>	<b>86.795</b>	<b>86.531</b>	<b>-1,86%</b>



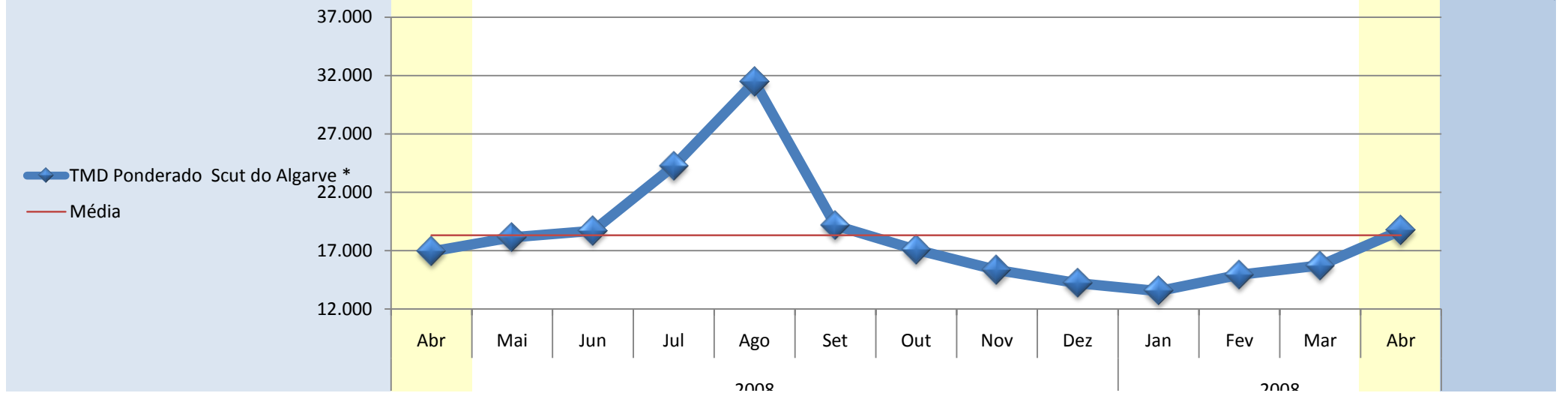
Norte	2008										2008				Var. Abr 2008/2009
	Abr	Mai	Jun	Jul	Ago	Set	Out	Nov	Dez	Jan	Fev	Mar	Abr		
A7	8.429	8.151	8.501	10.227	13.544	9.053	8.993	8.664	8.840	8.257	8.548	8.901	8.759	3,77%	
A11	10.251	9.861	10.140	11.552	12.833	10.476	10.372	9.911	9.784	9.501	9.724	10.276	10.249	-0,02%	
<b>TMD Ponderado Norte</b>	<b>9.187</b>	<b>8.862</b>	<b>9.183</b>	<b>10.778</b>	<b>13.248</b>	<b>9.645</b>	<b>9.566</b>	<b>9.183</b>	<b>9.233</b>	<b>8.775</b>	<b>9.037</b>	<b>9.473</b>	<b>9.379</b>	<b>2,05%</b>	



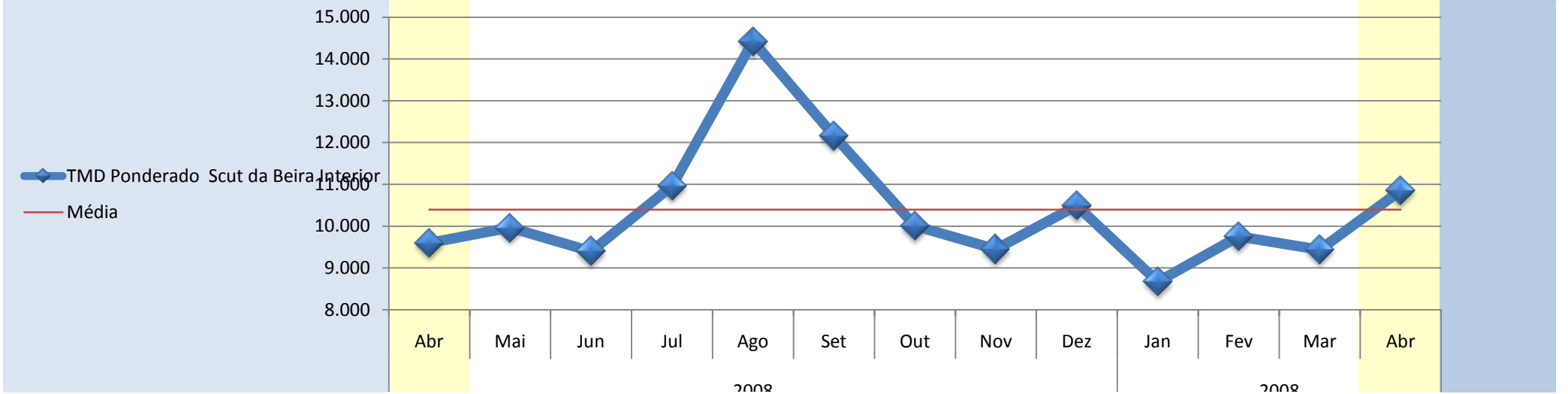
Oeste *	2008									2008				Var. Abr 2008/2009
	Abr	Mai	Jun	Jul	Ago	Set	Out	Nov	Dez	Jan	Fev	Mar	Abr	
A8	20.189	20.336	20.712	23.059	24.134	21.959	21.421	20.708	21.019	18.865	20.333	21.335	21.597	6,52%
A15	5.085	4.943	5.544	6.576	7.467	5.463	5.139	4.953	4.802	4.471	4.849	5.185	5.013	-1,42%
<b>TMD Ponderado Oeste *</b>	<b>16.182</b>	<b>16.253</b>	<b>16.688</b>	<b>18.686</b>	<b>19.712</b>	<b>17.583</b>	<b>17.102</b>	<b>16.528</b>	<b>16.717</b>	<b>15.047</b>	<b>16.226</b>	<b>17.051</b>	<b>17.197</b>	<b>5,90%</b>



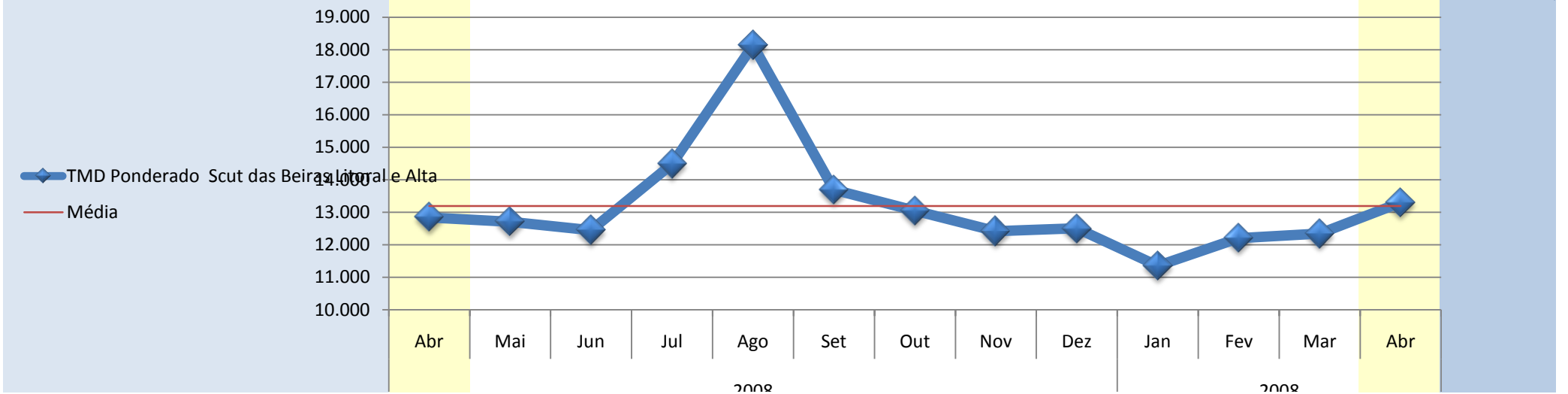
Scut do Algarve *	2008										2008			Var. Abr 2008/2009
	Abr	Mai	Jun	Jul	Ago	Set	Out	Nov	Dez	Jan	Fev	Mar	Abr	
A22	16.934	18.141	18.695	24.258	31.447	19.150	17.068	15.336	14.213	13.536	14.924	15.731	18.732	9,60%
<b>TMD Ponderado Scut do Algarve *</b>	<b>16.934</b>	<b>18.141</b>	<b>18.695</b>	<b>24.258</b>	<b>31.447</b>	<b>19.150</b>	<b>17.068</b>	<b>15.336</b>	<b>14.213</b>	<b>13.536</b>	<b>14.924</b>	<b>15.731</b>	<b>18.732</b>	<b>9,60%</b>



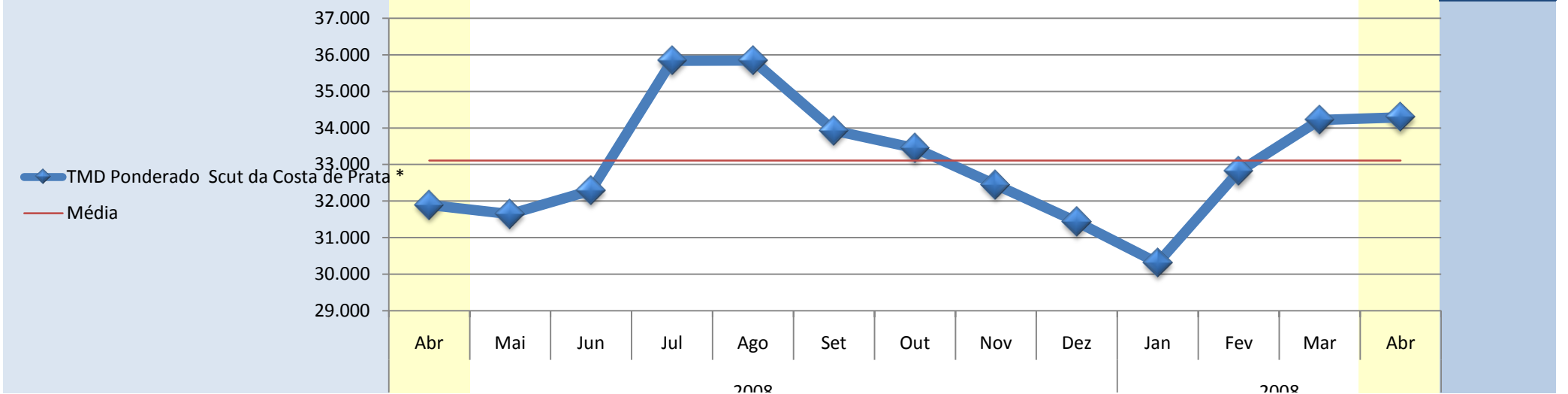
Scut da Beira Interior	2008									2008				Var. Abr 2008/2009
	Abr	Mai	Jun	Jul	Ago	Set	Out	Nov	Dez	Jan	Fev	Mar	Abr	
A23	9.596	9.964	9.398	10.965	14.423	12.162	10.004	9.446	10.489	8.669	9.755	9.439	10.854	11,59%
<b>TMD Ponderado Scut da Beira Interior</b>	<b>9.596</b>	<b>9.964</b>	<b>9.398</b>	<b>10.965</b>	<b>14.423</b>	<b>12.162</b>	<b>10.004</b>	<b>9.446</b>	<b>10.489</b>	<b>8.669</b>	<b>9.755</b>	<b>9.439</b>	<b>10.854</b>	<b>11,59%</b>



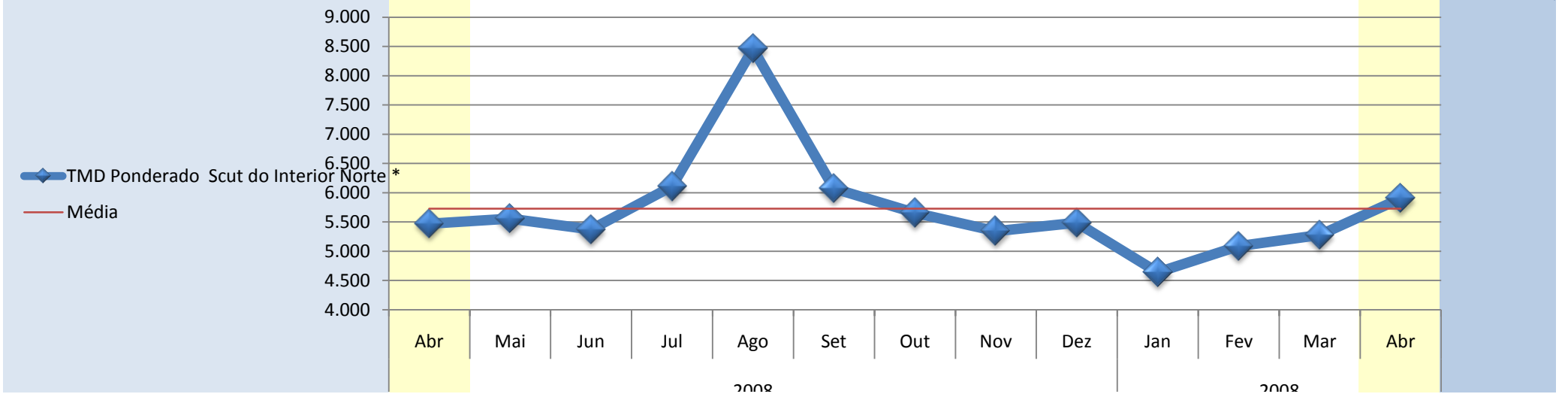
Scut das Beiras Litoral e Alta	2008									2008				Var. Abr 2008/2009
	Abr	Mai	Jun	Jul	Ago	Set	Out	Nov	Dez	Jan	Fev	Mar	Abr	
A25	12.842	12.706	12.445	14.484	18.136	13.688	13.046	12.415	12.503	11.349	12.205	12.341	13.299	3,43%
<b>TMD Ponderado Scut das Beiras Litoral e Alta</b>	<b>12.842</b>	<b>12.706</b>	<b>12.445</b>	<b>14.484</b>	<b>18.136</b>	<b>13.688</b>	<b>13.046</b>	<b>12.415</b>	<b>12.503</b>	<b>11.349</b>	<b>12.205</b>	<b>12.341</b>	<b>13.299</b>	<b>3,43%</b>



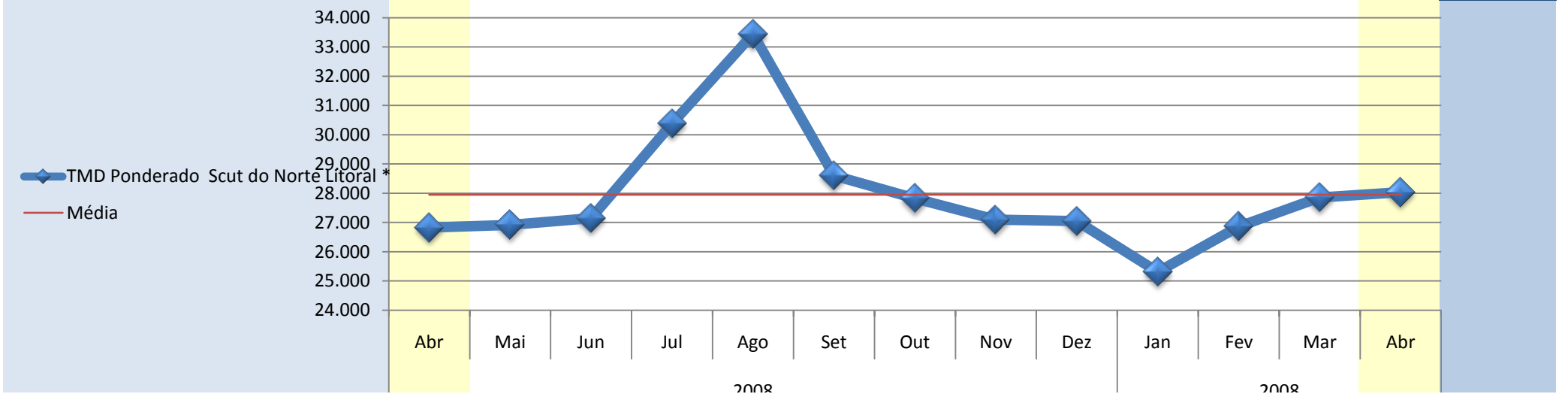
Scut da Costa de Prata *	2008									2008				Var. Abr 2008/2009
	Abr	Mai	Jun	Jul	Ago	Set	Out	Nov	Dez	Jan	Fev	Mar	Abr	
A17	11.825	12.861	14.768	17.229	19.161	16.595	16.266	15.807	15.903	14.801	16.082	16.923	17.512	32,48%
A25	29.854	28.435	31.148	35.511	38.485	31.330	30.753	30.049	29.518	27.947	30.451	31.761	31.984	6,66%
A29	45.034	44.653	43.402	47.137	44.340	45.732	45.220	43.724	41.776	40.896	44.122	45.924	45.609	1,26%
<b>TMD Ponderado Scut da Costa de Prata *</b>	<b>31.897</b>	<b>31.641</b>	<b>32.291</b>	<b>35.835</b>	<b>35.841</b>	<b>33.926</b>	<b>33.448</b>	<b>32.445</b>	<b>31.430</b>	<b>30.310</b>	<b>32.809</b>	<b>34.218</b>	<b>34.293</b>	<b>6,99%</b>



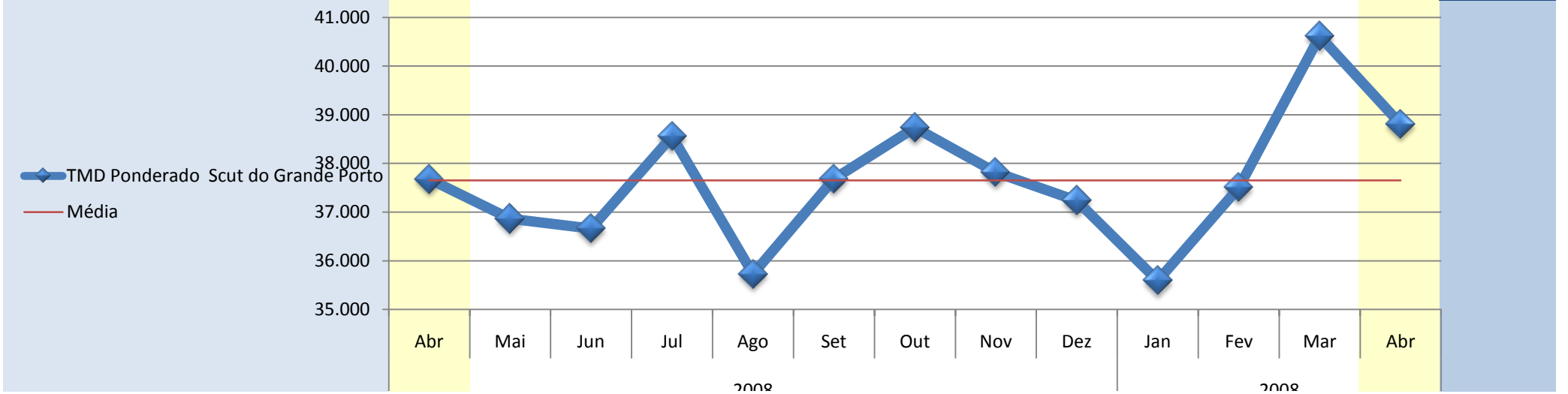
Scut do Interior Norte *	2008										2008			Var. Abr
	Abr	Mai	Jun	Jul	Ago	Set	Out	Nov	Dez	Jan	Fev	Mar	Abr	2008/2009
A24	5.472	5.555	5.371	6.108	8.459	6.072	5.655	5.345	5.488	4.640	5.087	5.277	5.902	7,29%
<b>TMD Ponderado Scut do Interior Norte *</b>	<b>5.472</b>	<b>5.555</b>	<b>5.371</b>	<b>6.108</b>	<b>8.459</b>	<b>6.072</b>	<b>5.655</b>	<b>5.345</b>	<b>5.488</b>	<b>4.640</b>	<b>5.087</b>	<b>5.277</b>	<b>5.902</b>	<b>7,29%</b>



Scut do Norte Litoral *	2008										2008				Var. Abr 2008/2009
	Abr	Mai	Jun	Jul	Ago	Set	Out	Nov	Dez	Jan	Fev	Mar	Abr		
A27	10.154	9.684	9.689	10.906	13.784	10.640	9.661	9.444	9.614	8.984	9.483	9.766	9.948	-2,07%	
A28	31.470	31.719	32.013	35.812	38.920	33.613	32.886	32.017	31.906	29.866	31.708	32.899	33.075	4,85%	
<b>TMD Ponderado Scut do Norte Litoral *</b>	<b>26.823</b>	<b>26.915</b>	<b>27.146</b>	<b>30.383</b>	<b>33.440</b>	<b>28.605</b>	<b>27.823</b>	<b>27.096</b>	<b>27.046</b>	<b>25.313</b>	<b>26.863</b>	<b>27.856</b>	<b>28.033</b>	<b>4,32%</b>	



Scut do Grande Porto	2008									2008				Var. Abr 2008/2009
	Abr	Mai	Jun	Jul	Ago	Set	Out	Nov	Dez	Jan	Fev	Mar	Abr	
A4	56.576	56.255	55.005	56.582	51.029	56.253	57.669	56.713	56.354	53.372	55.876	59.864	57.353	1,36%
A41	40.518	39.162	39.456	42.419	39.644	40.789	41.993	40.901	40.191	38.493	40.266	43.832	42.038	3,62%
A42	23.380	22.920	22.737	23.563	22.241	23.271	23.924	23.228	22.678	21.866	23.603	25.673	24.250	3,59%
<b>TMD Ponderado Scut do Grande Porto</b>	<b>37.677</b>	<b>36.862</b>	<b>36.660</b>	<b>38.558</b>	<b>35.728</b>	<b>37.686</b>	<b>38.734</b>	<b>37.815</b>	<b>37.236</b>	<b>35.590</b>	<b>37.503</b>	<b>40.616</b>	<b>38.806</b>	<b>2,91%</b>



Rua dos Lusíadas, 9 - 4º F • 1300-364 LISBOA  
Tel.: 213 643 116 • Fax: 213 643 119  
[inir@inir.pt](mailto:inir@inir.pt) [www.inir.pt](http://www.inir.pt)